

## Product datasheet for **TA309192**

### **NMDAR2B (GRIN2B) Rabbit Polyclonal Antibody**

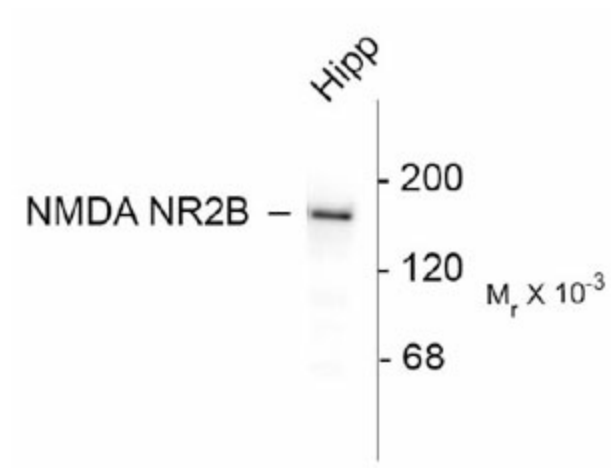
#### **Product data:**

<b>Product Type:</b>	Primary Antibodies
<b>Applications:</b>	WB
<b>Recommended Dilution:</b>	WB: 1:1000
<b>Reactivity:</b>	Rat, Mouse, Human
<b>Host:</b>	Rabbit
<b>Isotype:</b>	IgG
<b>Clonality:</b>	Polyclonal
<b>Immunogen:</b>	Fusion protein from the C-terminal region of the NR2B subunit
<b>Formulation:</b>	neat serum
<b>Purification:</b>	Neat Serum
<b>Conjugation:</b>	Unconjugated
<b>Storage:</b>	Store at -20°C as received.
<b>Stability:</b>	Stable for 12 months from date of receipt.
<b>Predicted Protein Size:</b>	180 kDa
<b>Gene Name:</b>	glutamate ionotropic receptor NMDA type subunit 2B
<b>Database Link:</b>	<a href="#">NP_000825</a> <a href="#">Entrez Gene 14812 Mouse</a> <a href="#">Entrez Gene 24410 Rat</a> <a href="#">Entrez Gene 2904 Human</a> <a href="#">Q13224</a>
<b>Synonyms:</b>	EIEE27; GluN2B; hNR3; MRD6; NMDAR2B; NR2B
<b>Protein Families:</b>	Druggable Genome, Ion Channels: Glutamate Receptors, Transmembrane
<b>Protein Pathways:</b>	Alzheimer's disease, Amyotrophic lateral sclerosis (ALS), Huntington's disease, Long-term potentiation, Neuroactive ligand-receptor interaction, Systemic lupus erythematosus



[View online »](#)

## Product images:



Western blot of 10 ug of rat hippocampal lysate showing specific immunolabeling of the ~180k NR2B subunit of the NMDA receptor.