

Product datasheet for **TA309190**

Grin2a Rabbit Polyclonal Antibody

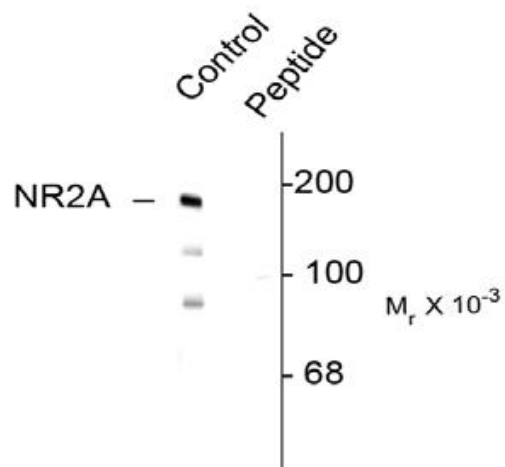
Product data:

Product Type:	Primary Antibodies
Applications:	WB
Recommended Dilution:	WB: 1:1000
Reactivity:	Mouse, Rat
Modifications:	Phospho-specific
Host:	Rabbit
Isotype:	IgG
Clonality:	Polyclonal
Immunogen:	Synthetic phospho-peptide corresponding to amino acid residues surrounding Tyr1325 conjugated to KLH
Formulation:	100 µl in 10 mM HEPES (pH 7.5), 150 mM NaCl, 100 µg per ml BSA and 50% glycerol.
Purification:	Affinity Purified
Conjugation:	Unconjugated
Storage:	Store at -20°C as received.
Stability:	Stable for 12 months from date of receipt.
Predicted Protein Size:	180 kDa
Gene Name:	glutamate receptor, ionotropic, NMDA2A (epsilon 1)
Database Link:	NP_032196 Entrez Gene 24409 Rat Entrez Gene 14811 Mouse P35436
Synonyms:	hNR2A; NMDAR2A; NR2A; OTTHUMP00000160135; OTTHUMP00000174531



[View online »](#)

Product images:



Western blot of rat hippocampal lysate showing specific immunolabeling of the ~180k NR2A subunit of the NMDAR phosphorylated at Tyr1325 (Control). The phosphospecificity of this labeling is shown in the second lane where immunoreactivity is blocked by preadsorption with the phospho-peptide (Peptide) used as antigen but not by the dephosphopeptide (not shown).