

Product datasheet for **TA309189**

Grin2a Rabbit Polyclonal Antibody

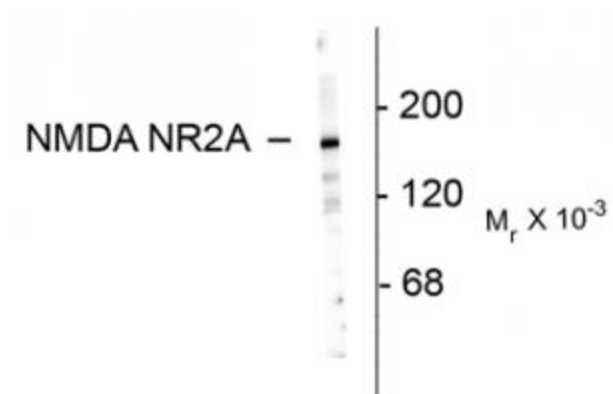
Product data:

Product Type:	Primary Antibodies
Applications:	WB
Recommended Dilution:	WB: 1:1000, IHC: 1:500
Reactivity:	Rat
Host:	Rabbit
Isotype:	IgG
Clonality:	Polyclonal
Immunogen:	Synthetic peptide corresponding to amino acid residues from the N-terminal region of the NR2A subunit conjugated to KLH
Formulation:	100 µl in 10 mM HEPES (pH 7.5), 150 mM NaCl, 100 µg per ml BSA and 50% glycerol.
Purification:	Affinity Purified
Conjugation:	Unconjugated
Storage:	Store at -20°C as received.
Stability:	Stable for 12 months from date of receipt.
Predicted Protein Size:	180 kDa
Gene Name:	glutamate ionotropic receptor NMDA type subunit 2A
Database Link:	NP_036705 Entrez Gene 24409 Rat Q00959
Synonyms:	hNR2A; NMDAR2A; NR2A; OTTHUMP00000160135; OTTHUMP00000174531



[View online »](#)

Product images:



Western blot of 10 ug of rat hippocampal lysate showing specific immunolabeling of the ~180k NR2A subunit of the NMDA receptor.