

## Product datasheet for **TA309187**

### NMDAR2A (GRIN2A) Rabbit Polyclonal Antibody

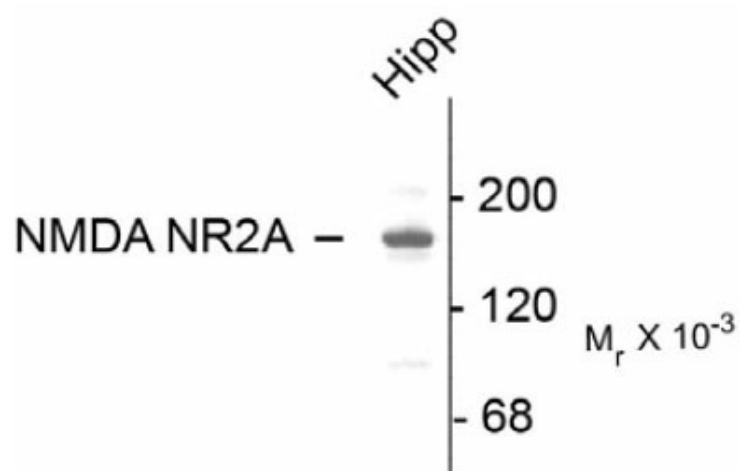
#### Product data:

Product Type:	Primary Antibodies
Applications:	WB
Recommended Dilution:	WB: 1:1000, IHC: 1:1000-2000, IP: 3ug/200ug lysate
Reactivity:	Rat, Mouse, Human
Host:	Rabbit
Isotype:	IgG
Clonality:	Polyclonal
Immunogen:	Fusion protein from the C-terminal region of the NR2A subunit
Formulation:	Lyophilized
Purification:	Affinity Purified
Conjugation:	Unconjugated
Storage:	Store at -20°C as received.
Stability:	Stable for 12 months from date of receipt.
Predicted Protein Size:	180 kDa
Gene Name:	glutamate ionotropic receptor NMDA type subunit 2A
Database Link:	<a href="#">NP_000824</a> <a href="#">Entrez Gene 14811 Mouse</a> <a href="#">Entrez Gene 24409 Rat</a> <a href="#">Entrez Gene 2903 Human</a> <a href="#">Q12879</a>
Synonyms:	EPND; FESD; GluN2A; LKS; NMDAR2A; NR2A
Protein Families:	Druggable Genome, Ion Channels: Glutamate Receptors, Ion Channels: Sodium, Transmembrane
Protein Pathways:	Alzheimer's disease, Amyotrophic lateral sclerosis (ALS), Calcium signaling pathway, Long-term potentiation, Neuroactive ligand-receptor interaction, Systemic lupus erythematosus



[View online »](#)

## Product images:



Western blot of 10 ug of rat hippocampal (Hipp) lysate showing specific immunolabeling of the ~180k NR2A subunit of the NMDA receptor.