

Product datasheet for **TA309185**

Grin1 Rabbit Polyclonal Antibody

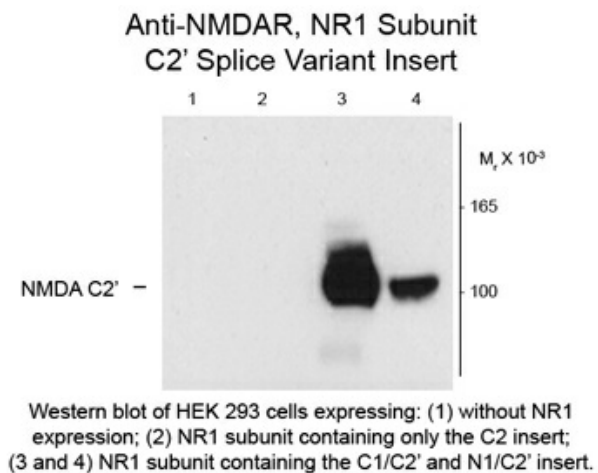
Product data:

Product Type:	Primary Antibodies
Applications:	WB
Recommended Dilution:	WB: 1:1000, IHC: 1:1000-2000
Reactivity:	Mouse, Rat
Host:	Rabbit
Isotype:	IgG
Clonality:	Polyclonal
Immunogen:	Synthetic peptide corresponding to amino acid residues specific to the NR1 subunit, C2' splice variant insert conjugated to KLH
Formulation:	Lyophilized
Purification:	Affinity Purified
Conjugation:	Unconjugated
Storage:	Store at -20°C as received.
Stability:	Stable for 12 months from date of receipt.
Predicted Protein Size:	120 kDa
Gene Name:	glutamate receptor, ionotropic, NMDA1 (zeta 1)
Database Link:	NP_032195 Entrez Gene 24408 Rat Entrez Gene 14810 Mouse P35438
Synonyms:	NMDA1; NMDAR1; NR1



[View online »](#)

Product images:



Western blot of 10 ug of HEK 293 cells expressing: Lane 1 - HEK cells without NR1 expression (Mock); Lane 2 - NR1 subunit containing only the C2 Insert; Lane 3 - NR1 subunit containing the C1 and C2' Insert; Lane 4 - NR1 subunit containing the N1 and C2' Insert showing specific immunolabeling of the ~120k NR1 subunit of the NMDA receptor containing the C2' splice variant insert.