

Product datasheet for **TA309184**

Grin1 Rabbit Polyclonal Antibody

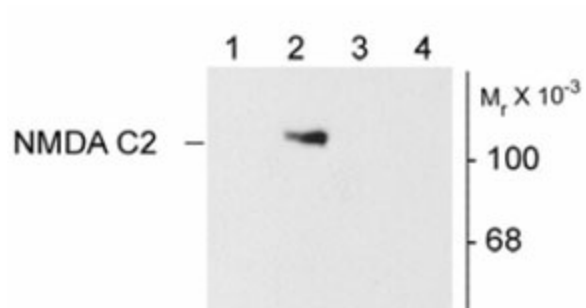
Product data:

| | |
|-------------------------|--|
| Product Type: | Primary Antibodies |
| Applications: | WB |
| Recommended Dilution: | WB: 1:1000, IHC: 1:1000-2000 |
| Reactivity: | Mouse, Rat |
| Host: | Rabbit |
| Isotype: | IgG |
| Clonality: | Polyclonal |
| Immunogen: | Synthetic peptide corresponding to amino acid residues specific to the NR1 subunit, C2 splice variant insert conjugated to KLH |
| Formulation: | Lyophilized |
| Purification: | Affinity Purified |
| Conjugation: | Unconjugated |
| Storage: | Store at -20°C as received. |
| Stability: | Stable for 12 months from date of receipt. |
| Predicted Protein Size: | 120 kDa |
| Gene Name: | glutamate receptor, ionotropic, NMDA1 (zeta 1) |
| Database Link: | NP_032195 Entrez Gene 24408 Rat Entrez Gene 14810 Mouse P35438 |
| Synonyms: | NMDA1; NMDAR1; NR1 |



[View online »](#)

Product images:



Western blot of 10 ug of HEK 293 cells showing specific immunolabeling of the ~120k NR1 subunit of the NMDA receptor containing the C2 splice variant insert. Lane 1 - HEK cells without NR1 expression; Lane 2 - NR1 subunit containing only the C2 Insert; Lane 3 - NR1 subunit containing the C1 and C2' insert; Lane 4 - NR1 subunit containing the N1 and C2' insert.