

Product datasheet for **TA309181**

Nefm Chicken Polyclonal Antibody

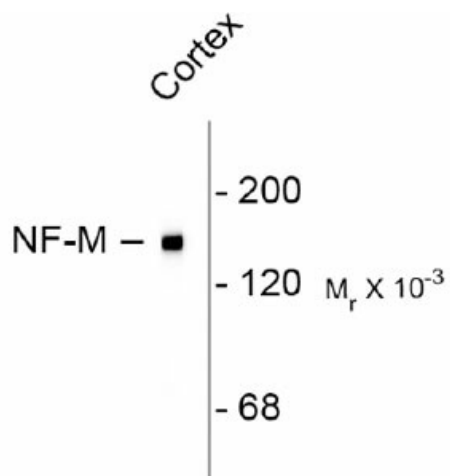
Product data:

Product Type:	Primary Antibodies
Applications:	WB
Recommended Dilution:	WB: 1:5,000, IF: 1:1000
Reactivity:	Rat
Host:	Chicken
Isotype:	IgY
Clonality:	Polyclonal
Immunogen:	Preparation containing the extreme C-terminus expressed in and purified from E. Coli
Formulation:	total IgY fraction in PBS + 10 mM NaN ₃ .
Purification:	Total IgY fraction
Conjugation:	Unconjugated
Storage:	Store at -20°C as received.
Stability:	Stable for 12 months from date of receipt.
Predicted Protein Size:	145 kDa
Gene Name:	neurofilament, medium polypeptide
Database Link:	NP_058725 Entrez Gene 24588 Rat P12839
Synonyms:	NEF3; NF-M; NFM



[View online »](#)

Product images:



Western blot of rat cortex lysate showing specific immunolabeling of the ~ 145k NF-M protein.