

## Product datasheet for **TA309179**

### Nefl Chicken Polyclonal Antibody

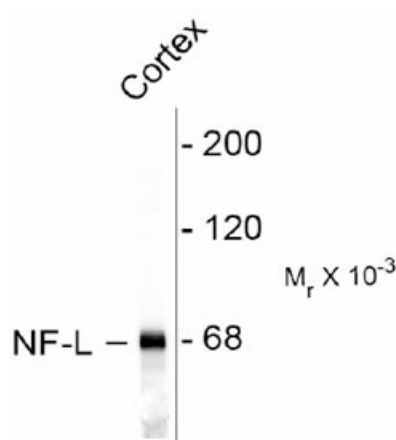
#### Product data:

Product Type:	Primary Antibodies
Applications:	WB
Recommended Dilution:	WB: 1:10,000, IF: 1:5,000
Reactivity:	Rat
Host:	Chicken
Isotype:	IgY
Clonality:	Polyclonal
Immunogen:	Preparation of bovine spinal cord NF-L
Formulation:	total IgY fraction in PBS + 10 mM NaN <sub>3</sub> .
Purification:	Total IgY fraction
Conjugation:	Unconjugated
Storage:	Store at -20°C as received.
Stability:	Stable for 12 months from date of receipt.
Predicted Protein Size:	68 kDa
Gene Name:	neurofilament, light polypeptide
Database Link:	<a href="#">NP_113971</a> <a href="#">Entrez Gene 83613 Rat P19527</a>
Background:	Neurofilaments are type IV intermediate filament heteropolymers composed of light, medium, and heavy chains. Neurofilaments comprise the axoskeleton and they functionally maintain the neuronal caliber. They may also play a role in intracellular transport to axons and dendrites. This gene encodes the light chain neurofilament protein. Mutations in this gene cause Charcot-Marie-Tooth disease types 1F (CMT1F) and 2E (CMT2E), disorders of the peripheral nervous system that are characterized by distinct neuropathies. A pseudogene has been identified on chromosome Y. [provided by RefSeq]
Synonyms:	CMT1F; CMT2E; FLJ53642; neurofilament-light; NF-L; NF68; NFL



[View online »](#)

## Product images:



Western blot of rat cortex lysate showing specific immunolabeling of the ~ 68k NF-L protein.