

Product datasheet for **TA309177**

Nefh Chicken Polyclonal Antibody

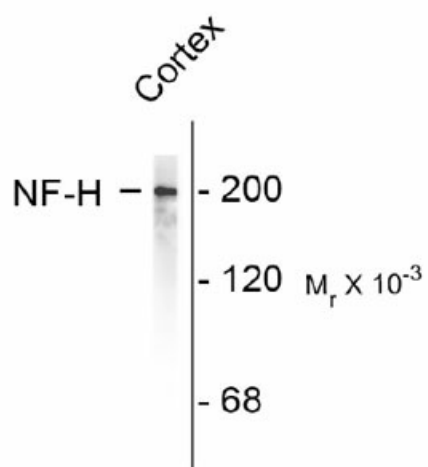
Product data:

Product Type:	Primary Antibodies
Applications:	IF, WB
Recommended Dilution:	WB: 1:50,000, IF: 1:25,000
Reactivity:	Rat
Host:	Chicken
Isotype:	IgY
Clonality:	Polyclonal
Immunogen:	Purified bovine NF-H
Formulation:	total IgY fraction in PBS + 10 mM NaN ₃ .
Purification:	Total IgY fraction
Conjugation:	Unconjugated
Storage:	Store at -20°C as received.
Stability:	Stable for 12 months from date of receipt.
Predicted Protein Size:	200 kDa
Gene Name:	neurofilament, heavy polypeptide
Database Link:	NP_036739 Entrez Gene 24587 Rat
Background:	Neurofilaments are type IV intermediate filament heteropolymers composed of light, medium, and heavy chains. Neurofilaments comprise the axoskeleton and functionally maintain neuronal caliber. They may also play a role in intracellular transport to axons and dendrites. This gene encodes the heavy neurofilament protein. This protein is commonly used as a biomarker of neuronal damage and susceptibility to amyotrophic lateral sclerosis (ALS) has been associated with mutations in this gene. [provided by RefSeq]
Synonyms:	KIAA0845; NF-H; NFH

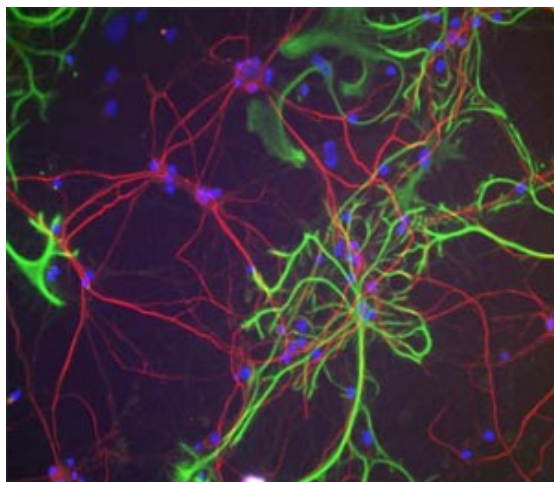


[View online »](#)

Product images:



Western blot of rat cortex lysate showing specific immunolabeling of the ~200k NF-H protein.



Immunofluorescence of rat cortical neurons and glia showing NF-H staining (red).