

## Product datasheet for **TA309175**

### Myelin Basic Protein (MBP) Chicken Polyclonal Antibody

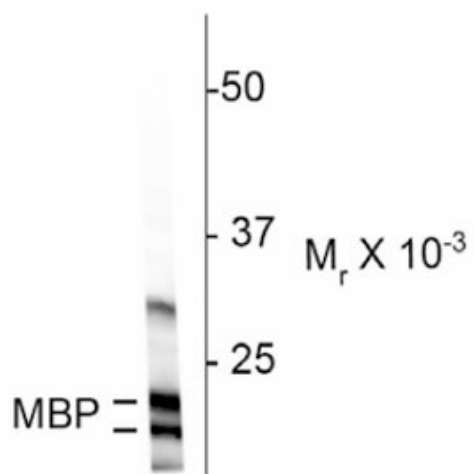
#### Product data:

|                         |  |
|-------------------------|--|
| Product Type:           | Primary Antibodies   |
| Applications:           | IF, WB   |
| Recommended Dilution:   | WB: 1:5,000, IF: 1:500   |
| Reactivity:             | Bovine, Human, Mouse, Rat  |
| Host:                   | Chicken  |
| Isotype:                | IgY  |
| Clonality:              | Polyclonal   |
| Immunogen:              | Three peptide sequences conserved in higher vertebrate MBP proteins  |
| Formulation:            | total IgY fraction in PBS + 10 mM NaN <sub>3</sub> .   |
| Purification:           | Total IgY fraction   |
| Conjugation:            | Unconjugated   |
| Storage:                | Store at -20°C as received.  |
| Stability:              | Stable for 12 months from date of receipt.   |
| Predicted Protein Size: | 18/22 kDa  |
| Gene Name:              | myelin basic protein   |
| Database Link:          | <a href="#">NP_001020252</a><br><a href="#">Entrez Gene 17196 Mouse</a> <a href="#">Entrez Gene 24547 Rat</a> <a href="#">Entrez Gene 4155 Human</a><br><a href="#">P02686</a> |
| Synonyms:               | MGC99675   |

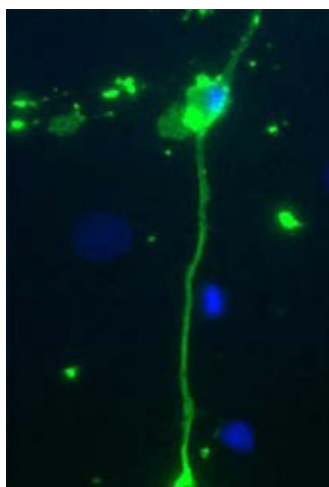


[View online »](#)

## Product images:



Western blot of rat cortex homogenate showing specific immunolabeling of the ~ 18 & 22k MBP protein.



Rat mixed neuron/glia cultures stained with chicken anti-Myelin Basic Protein (green). Blue is a DNA stain. Note that the Myelin Basic Protein antibody stains an oligodendrocyte and some membrane shed from this cell. Other cells in the field include neurons, astrocytes, microglia and fibroblasts, all of which are completely negative.