

Product datasheet for **TA309173**

Grm7 Rabbit Polyclonal Antibody

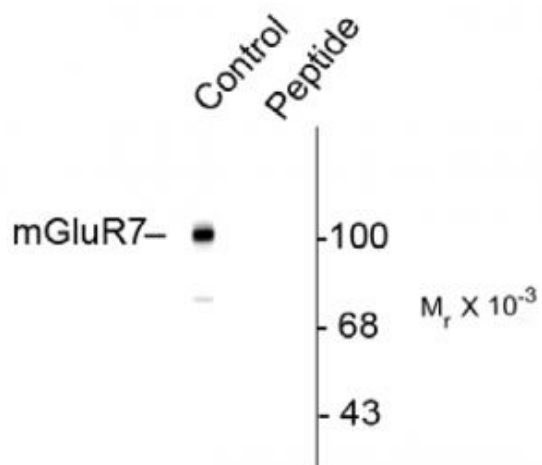
Product data:

Product Type:	Primary Antibodies
Applications:	WB
Recommended Dilution:	WB: 1:1000
Reactivity:	Rat, Mouse
Modifications:	Phospho-specific
Host:	Rabbit
Isotype:	IgG
Clonality:	Polyclonal
Immunogen:	Synthetic phospho-peptide corresponding to amino acid residues surrounding Ser862 conjugated to KLH
Formulation:	100 µl in 10 mM HEPES (pH 7.5), 150 mM NaCl, 100 µg per ml BSA and 50% glycerol.
Purification:	Affinity Purified
Conjugation:	Unconjugated
Storage:	Store at -20°C as received.
Stability:	Stable for 12 months from date of receipt.
Predicted Protein Size:	102 kDa
Gene Name:	glutamate receptor, metabotropic 7
Database Link:	NP_796302 Entrez Gene 81672 Rat Entrez Gene 108073 Mouse Q68ED2
Synonyms:	FLJ40498; GLUR7; GPRC1G; mGlu7; MGLUR7



[View online »](#)

Product images:



Western blot of mouse brain lysate showing the specific immunolabeling of the ~102k mGluR7 protein phosphorylated at Ser862. Immunolabeling