

Product datasheet for **TA309172**

Grm5 Rabbit Polyclonal Antibody

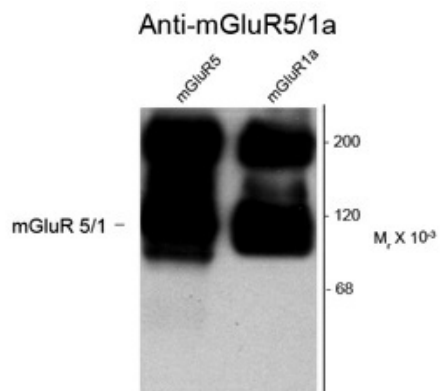
Product data:

Product Type:	Primary Antibodies
Applications:	WB
Recommended Dilution:	WB: 1:1,000, IHC 1:500
Reactivity:	Rat
Host:	Rabbit
Isotype:	IgG
Clonality:	Polyclonal
Immunogen:	Synthetic peptide corresponding to amino acid residues from the C-terminal region conjugated to KLH
Formulation:	100 µl in 10 mM HEPES (pH 7.5), 150 mM NaCl, 100 µg per ml BSA and 50% glycerol.
Purification:	Affinity Purified
Conjugation:	Unconjugated
Storage:	Store at -20°C as received.
Stability:	Stable for 12 months from date of receipt.
Predicted Protein Size:	125/250 kDa
Gene Name:	glutamate metabotropic receptor 5
Database Link:	NP_058708 Entrez Gene 24418 Rat P31424
Synonyms:	GPRC1E; mGlu5; MGLUR5; OTTHUMP00000165953; OTTHUMP00000165957



[View online »](#)

Product images:



Western blot of 10 μ g of HEK 293 cells expressing mGluR1a and mGluR5 showing specific immunolabeling of the ~125k monomer and the ~250k dimers of mGluR1a and mGluR5.

Western blot of 10 μ g of HEK 293 cells expressing mGluR1a and mGluR5 showing the specific immunolabeling of the ~125k monomer and the ~250k dimers of mGluR1a and mGluR5.