

Product datasheet for **TA309170**

Grm1 Rabbit Polyclonal Antibody

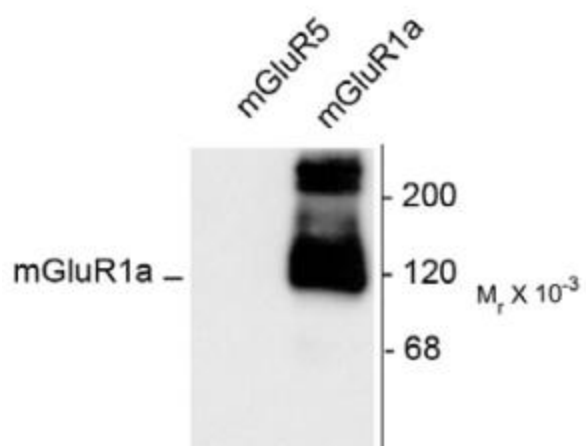
Product data:

Product Type:	Primary Antibodies
Applications:	WB
Recommended Dilution:	WB: 1:1,000, IHC 1:500
Reactivity:	Rat, Mouse
Host:	Rabbit
Isotype:	IgG
Clonality:	Polyclonal
Immunogen:	Synthetic peptide corresponding to amino acid residues from the C-terminal region conjugated to KLH
Formulation:	100 µl in 10 mM HEPES (pH 7.5), 150 mM NaCl, 100 µg per ml BSA and 50% glycerol.
Purification:	Affinity Purified
Conjugation:	Unconjugated
Storage:	Store at -20°C as received.
Stability:	Stable for 12 months from date of receipt.
Predicted Protein Size:	125/250 kDa
Gene Name:	glutamate receptor, metabotropic 1
Database Link:	NP_058672 Entrez Gene 24414 Rat Entrez Gene 14816 Mouse P97772
Synonyms:	GPRC1A; GRM1A; mGlu1; MGLUR1; MGLUR1A; OTTHUMP00000017365; OTTHUMP00000017366



[View online »](#)

Product images:



Western blot of 10 ug of HEK 293 cells expressing mGluR1a and mGluR5 showing the specific immunolabeling of the ~125k monomer and the ~250k dimer of mGluR1a. The mGluR1a antibody shows no reactivity toward mGluR5.