

## Product datasheet for **TA309167**

### Map2k1 Rabbit Polyclonal Antibody

#### Product data:

Product Type:	Primary Antibodies
Applications:	WB
Recommended Dilution:	WB: 1:1000
Reactivity:	Human, Bovine, Rat, Dog
Modifications:	Phospho-specific
Host:	Rabbit
Isotype:	IgG
Clonality:	Polyclonal
Immunogen:	Synthetic phospho-peptide corresponding to amino acid residues surrounding Thr292 conjugated to KLH
Formulation:	100 µl in 10 mM HEPES (pH 7.5), 150 mM NaCl, 100 µg per ml BSA and 50% glycerol.
Purification:	Affinity Purified
Conjugation:	Unconjugated
Storage:	Store at -20°C as received.
Stability:	Stable for 12 months from date of receipt.
Predicted Protein Size:	45 kDa
Gene Name:	mitogen-activated protein kinase kinase 1
Database Link:	<a href="#">NP_032953</a> <a href="#">Entrez Gene 5604 Human</a> <a href="#">Entrez Gene 170851 Rat</a> <a href="#">Entrez Gene 478347 Dog</a> <a href="#">P31938</a>

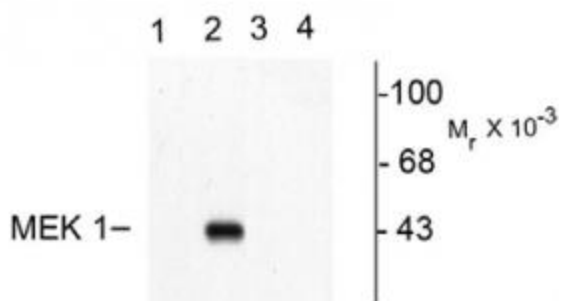
**Background:** The protein encoded by this gene is a member of the dual specificity protein kinase family, which acts as a mitogen-activated protein (MAP) kinase kinase. MAP kinases, also known as extracellular signal-regulated kinases (ERKs), act as an integration point for multiple biochemical signals. This protein kinase lies upstream of MAP kinases and stimulates the enzymatic activity of MAP kinases upon wide variety of extra- and intracellular signals. As an essential component of MAP kinase signal transduction pathway, this kinase is involved in many cellular processes such as proliferation, differentiation, transcription regulation and development. [provided by RefSeq]



[View online »](#)

Synonyms: MAPKK1; MEK1; MKK1; PRKMK1

### Product images:



Western blot of recombinant wild type and mutant MEK 1 showing immunolabeling of the ~45k MEK-1 protein phosphorylated at Thr292. Lanes 1 and 2 are WT MEK 1 and Lanes 3 and 4 are mutant MEK 1 (T292A). MAP kinase was coexpressed in the samples run in Lanes 2 and 4.