

Product datasheet for TA309162

MAP2 Chicken Polyclonal Antibody

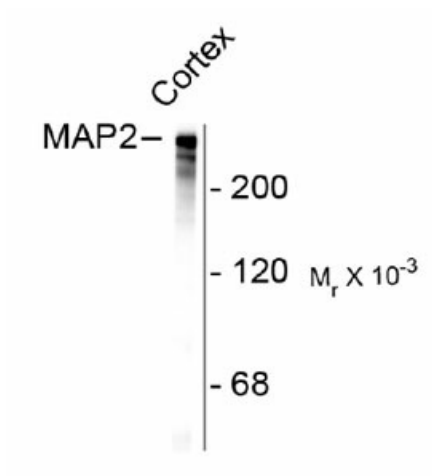
Product data:

Product Type:	Primary Antibodies
Applications:	WB
Recommend Dilution:	WB: 1:20,000, IF: 1:2,500
Reactivity:	Bovine, Human, Mouse, Rat
Host:	Chicken
Isotype:	IgY
Clonality:	Polyclonal
Immunogen:	Bovine MAP2 isolated from brain by the GTP microtubule cycling method
Formulation:	total IgY fraction in PBS + 10 mM NaN ₃ .
Purification:	Total IgY fraction
Storage:	Store at -20°C as received.
Stability:	Stable for 12 months from date of receipt.
Predicted Protein Size:	280 kDa
Gene Name:	microtubule associated protein 2
Database Link:	NP_002365 Entrez Gene 17756 Mouse Entrez Gene 25595 Rat Entrez Gene 4133 Human
Background:	This gene encodes a protein that belongs to the microtubule-associated protein family. The proteins of this family are thought to be involved in microtubule assembly, which is an essential step in neurogenesis. The products of similar genes in rat and mouse are neuron-specific cytoskeletal proteins that are enriched in dendrites, implicating a role in determining and stabilizing dendritic shape during neuron development. A number of alternatively spliced variants encoding distinct isoforms have been described. [provided by RefSeq]
Synonyms:	MAP2A; MAP2B; MAP2C
Protein Families:	Adult stem cells, Druggable Genome, ES Cell Differentiation/IPS



[View online »](#)

Product images:



Western blot of rat cortex lysate showing specific immunolabeling of the ~280k MAP2 protein.