

Product datasheet for **TA309161**

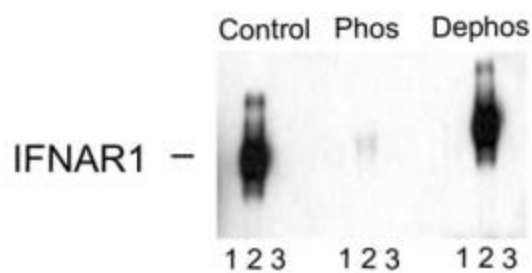
Ifnar1 Rabbit Polyclonal Antibody

Product data:

Product Type:	Primary Antibodies
Applications:	WB
Recommended Dilution:	WB: 1:1000, IHC: 1:1000
Reactivity:	Rat
Modifications:	Phospho-specific
Host:	Rabbit
Isotype:	IgG
Clonality:	Polyclonal
Immunogen:	Synthetic phospho-peptide corresponding to amino acid residues surrounding Ser535/539 conjugated to KLH
Formulation:	100 µl in 10 mM HEPES (pH 7.5), 150 mM NaCl, 100 µg per ml BSA and 50% glycerol.
Purification:	Affinity Purified
Conjugation:	Unconjugated
Storage:	Store at -20°C as received.
Stability:	Stable for 12 months from date of receipt.
Predicted Protein Size:	110-130 kDa
Gene Name:	interferon alpha and beta receptor subunit 1
Database Link:	NP_001099363 Entrez Gene 288264 Rat
Background:	The protein encoded by this gene is a type I membrane protein that forms one of the two chains of a receptor for interferons alpha and beta. Binding and activation of the receptor stimulates Janus protein kinases, which in turn phosphorylate several proteins, including STAT1 and STAT2. The encoded protein also functions as an antiviral factor. [provided by RefSeq]
Synonyms:	AVP; IFN-alpha-REC; IFNAR; IFNBR; IFRC



[View online »](#)

Product images:

Western blot of immunoprecipitates from HEK 293 cells transfected with 1. Mock, 2. IFNAR1 WT, and 3. IFNAR1 S535A and S539A mutants showing specific immunolabeling of the ~110k to ~130k IFNAR1 WT. The immunolabeling is absent in IFNAR1 Ser535 and Ser539 mutants (Control). The immunolabeling is blocked by the phosphopeptide (Phos) used as the antigen but not by the corresponding dephosphopeptide (Dephos).