

Product datasheet for **TA309158**

Gira1 Rabbit Polyclonal Antibody

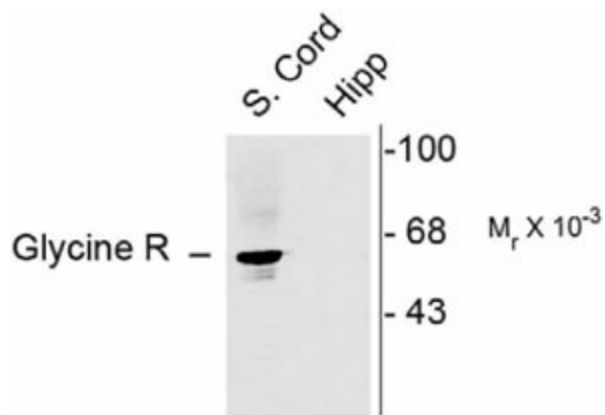
Product data:

Product Type:	Primary Antibodies
Applications:	WB
Recommended Dilution:	WB: 1:1000, IHC: 1:1000
Reactivity:	Rat, Mouse
Host:	Rabbit
Isotype:	IgG
Clonality:	Polyclonal
Immunogen:	Synthetic peptide corresponding to amino acid residues from the N-terminal region conjugated to KLH
Formulation:	lyophilized
Purification:	Affinity Purified
Conjugation:	Unconjugated
Storage:	Store at -20°C as received.
Stability:	Stable for 12 months from date of receipt.
Predicted Protein Size:	48 kDa
Gene Name:	glycine receptor, alpha 1 subunit
Database Link:	NP_065238 Entrez Gene 25674 Rat Entrez Gene 14654 Mouse Q64018
Synonyms:	MGC138878; MGC138879; STHE



[View online »](#)

Product images:



Western blot of rat hippocampal (Hipp) lysate showing specific immunolabeling of the ~78k synapsin I doublet protein.