

Product datasheet for **TA309157**

GAPDHS Mouse Monoclonal Antibody [Clone ID: 1D4]

Product data:

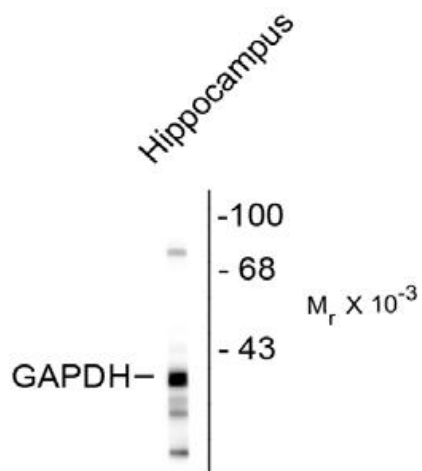
Product Type:	Primary Antibodies
Clone Name:	1D4
Applications:	IF, WB
Recommended Dilution:	WB: 1:1,000, IF: 1:100
Reactivity:	Human, Mouse, Rat
Host:	Mouse
Isotype:	IgM
Clonality:	Monoclonal
Immunogen:	Purified porcine GAPDH
Formulation:	total IgM fraction + 10 mM NaN ₃ .
Purification:	Total IgM fraction--concentrated culture supernatant
Conjugation:	Unconjugated
Storage:	Store at -20°C as received.
Stability:	Stable for 12 months from date of receipt.
Predicted Protein Size:	38 kDa
Gene Name:	glyceraldehyde-3-phosphate dehydrogenase, spermatogenic
Database Link:	NP_055179 Entrez Gene 14447 Mouse Entrez Gene 66020 Rat Entrez Gene 26330 Human O14556
Background:	This gene encodes a protein belonging to the glyceraldehyde-3-phosphate dehydrogenase family of enzymes that play an important role in carbohydrate metabolism. Like its somatic cell counterpart, this sperm-specific enzyme functions in a nicotinamide adenine dinucleotide-dependent manner to remove hydrogen and add phosphate to glyceraldehyde 3-phosphate to form 1,3-diphosphoglycerate. During spermiogenesis, this enzyme may play an important role in regulating the switch between different energy-producing pathways, and it is required for sperm motility and male fertility. [provided by RefSeq]
Synonyms:	GAPD2; GAPDH-2; GAPDS; HEL-S-278; HSD-35



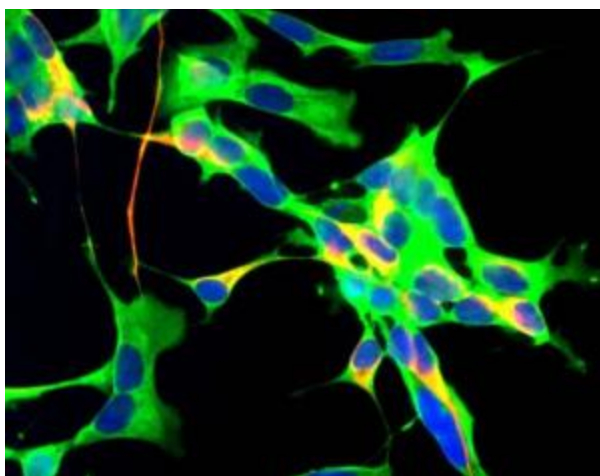
[View online »](#)

Protein Families: Druggable Genome

Product images:



Western blot of rat hippocampal lysate showing the immunolabeling of ~38k GAPDH protein.



Human neuroblastoma SH-SY5Y cells stained with mouse anti-GAPDH (green), chicken antibody to neurofilament NF-H (catalog # 1451-NFH) (red) and DNA (blue).