

Product datasheet for **TA309156**

Gria2 Rabbit Polyclonal Antibody

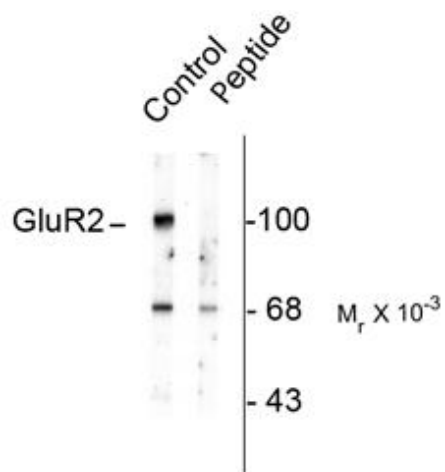
Product data:

Product Type:	Primary Antibodies
Applications:	WB
Recommended Dilution:	WB: 1:1000
Reactivity:	Rat
Modifications:	Phospho-specific
Host:	Rabbit
Isotype:	IgG
Clonality:	Polyclonal
Immunogen:	Synthetic phospho-peptide corresponding to amino acid residues surrounding Ser880 conjugated to KLH
Formulation:	100 µl in 10 mM HEPES (pH 7.5), 150 mM NaCl, 100 µg per ml BSA and 50% glycerol.
Purification:	Affinity Purified
Conjugation:	Unconjugated
Storage:	Store at -20°C as received.
Stability:	Stable for 12 months from date of receipt.
Predicted Protein Size:	100 kDa
Gene Name:	glutamate ionotropic receptor AMPA type subunit 2
Database Link:	NP_058957 Entrez Gene 29627 Rat P19491
Synonyms:	GluA2; gluR-B; GluR-K2; GLUR2; GluR2; GLURB; HBGR2



[View online »](#)

Product images:



Western blot of rat brain homogenate showing specific immunolabeling of the ~100k GluR2 protein phosphorylated at Ser880 (control). Immunolabeling is blocked by preadsorption with the phospho-peptide used as antigen (Peptide) but not by the corresponding dephospho-peptide (not shown).