

## Product datasheet for **TA309155**

### Gria3 Rabbit Polyclonal Antibody

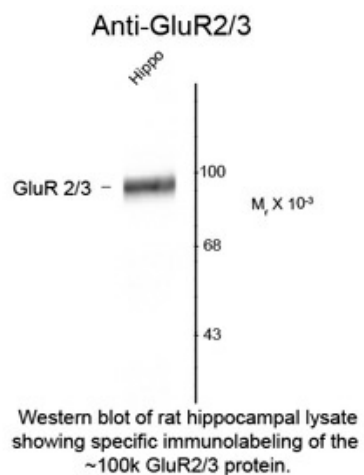
#### Product data:

|                         |   |
|-------------------------|---|
| Product Type:           | Primary Antibodies  |
| Applications:           | WB  |
| Recommended Dilution:   | WB: 1:1000  |
| Reactivity:             | Rat   |
| Host:                   | Rabbit  |
| Isotype:                | IgG   |
| Clonality:              | Polyclonal  |
| Immunogen:              | Synthetic peptide corresponding to amino acid residues from the C-terminal region conjugated to KLH |
| Formulation:            | 100 µl in 10 mM HEPES (pH 7.5), 150 mM NaCl, 100 µg per ml BSA and 50% glycerol.                    |
| Purification:           | Affinity Purified   |
| Conjugation:            | Unconjugated  |
| Storage:                | Store at -20°C as received.   |
| Stability:              | Stable for 12 months from date of receipt.  |
| Predicted Protein Size: | 100 kDa   |
| Gene Name:              | glutamate receptor, ionotropic, AMPA3 (alpha 3)   |
| Database Link:          | <a href="#">NP_058582</a><br><a href="#">Entrez Gene 29628 Rat</a><br><a href="#">Q9Z2W9</a>        |
| Synonyms:               | 2900064I19Rik; GluA3; GluR-3; Glur-3; GluR-C; GluR-K3; GLUR3; Glur3; Gluralpha3; mKIAA4184          |



[View online »](#)

## Product images:



Western blot of rat hippocampal lysate showing specific immunolabeling of the ~100k GluR2/3 protein.