

Product datasheet for **TA309152**

Gria1 Rabbit Polyclonal Antibody

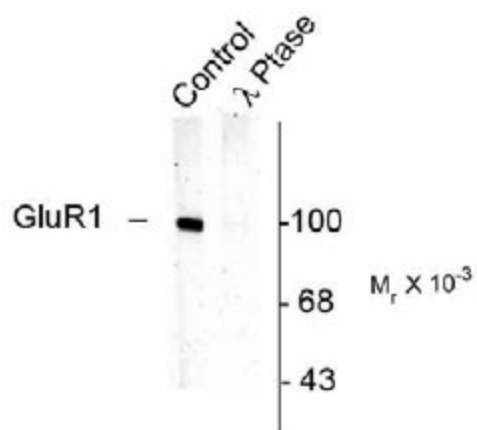
Product data:

Product Type:	Primary Antibodies
Applications:	WB
Recommended Dilution:	WB: 1:1000
Reactivity:	Rat
Modifications:	Phospho-specific
Host:	Rabbit
Isotype:	IgG
Clonality:	Polyclonal
Immunogen:	Synthetic phospho-peptide corresponding to amino acid residues surrounding Ser831 conjugated to KLH
Formulation:	100 µl in 10 mM HEPES (pH 7.5), 150 mM NaCl, 100 µg per ml BSA and 50% glycerol.
Purification:	Affinity Purified
Conjugation:	Unconjugated
Storage:	Store at -20°C as received.
Stability:	Stable for 12 months from date of receipt.
Predicted Protein Size:	100 kDa
Gene Name:	glutamate ionotropic receptor AMPA type subunit 1
Database Link:	NP_113796 Entrez Gene 50592 Rat P19490
Synonyms:	GluA1; GLUH1; GluR-A; gluR-A; GLUR1; GLURA; GluRA; HBGR1; HIPA1



[View online »](#)

Product images:



Western blot of rat hippocampal lysate showing specific immunolabeling of the ~100k GluR1 protein phosphorylated at Ser831 (Control). The phosphospecificity of this labeling is shown in the second lane (lambda-phosphatase: λ-Ptase). The blot is identical to the control except that it was incubated in λ-Ptase (1200 units for 30 min) before being exposed to the GluR1 Ser831 antibody. The immunolabeling is completely eliminated by treatment with λ-Ptase.