

Product datasheet for **TA309151**

Gria1 Mouse Monoclonal Antibody

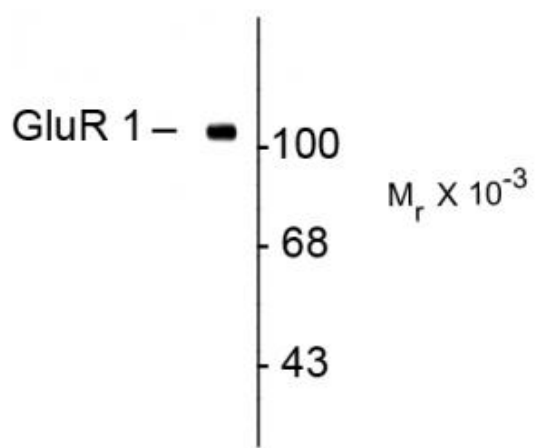
Product data:

Product Type:	Primary Antibodies
Applications:	WB
Recommended Dilution:	WB: 1:1000
Reactivity:	Mouse, Rat
Host:	Mouse
Isotype:	IgG
Clonality:	Monoclonal
Immunogen:	Synthetic peptide corresponding to amino acid residues from the N-terminal region conjugated to KLH
Formulation:	100 µl in 10 mM HEPES (pH 7.5), 150 mM NaCl, 100 µg per ml BSA and 50% glycerol.
Purification:	Protein G purified
Conjugation:	Unconjugated
Storage:	Store at -20°C as received.
Stability:	Stable for 12 months from date of receipt.
Predicted Protein Size:	100 kDa
Gene Name:	glutamate receptor, ionotropic, AMPA1 (alpha 1)
Database Link:	NP_032191 Entrez Gene 50592 Rat Entrez Gene 14799 Mouse P23818
Synonyms:	GluA1; GLUH1; GluR-A; gluR-A; GLUR1; GLURA; GluRA; HBGR1; HIPA1



[View online »](#)

Product images:



Western blot of rat hippocampal lysate showing specific immunolabeling