

Product datasheet for **TA309145**

Slc6a1 Rabbit Polyclonal Antibody

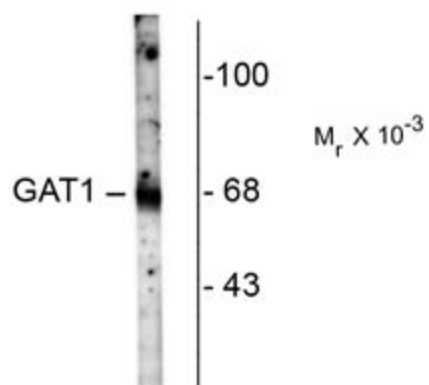
Product data:

Product Type:	Primary Antibodies
Applications:	WB
Recommended Dilution:	WB: 1:1000, IHC: 1:100-1:200
Reactivity:	Rat
Host:	Rabbit
Isotype:	IgG
Clonality:	Polyclonal
Immunogen:	Synthetic peptide corresponding to amino acid residues from the C-terminal region conjugated to KLH
Formulation:	100 µl in 10 mM HEPES (pH 7.5), 150 mM NaCl, 100 µg per ml BSA and 50% glycerol.
Purification:	Affinity Purified
Conjugation:	Unconjugated
Storage:	Store at -20°C as received.
Stability:	Stable for 12 months from date of receipt.
Predicted Protein Size:	67 kDa
Gene Name:	solute carrier family 6 member 1
Database Link:	NP_077347 Entrez Gene 79212 Rat P23978
Synonyms:	GABATHG; GABATR; GABT1; GAT-1; GAT1



[View online »](#)

Product images:



Western blot of rat hippocampal homogenate showing specific immunolabeling of the ~ 67k GAT-1 protein.