

Product datasheet for **TA309144**

Gabbr1 Rabbit Polyclonal Antibody

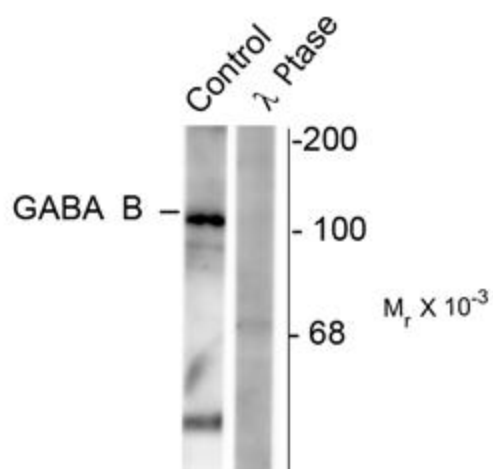
Product data:

Product Type:	Primary Antibodies
Applications:	WB
Recommended Dilution:	WB: 1:1000
Reactivity:	Rat
Modifications:	Phospho-specific
Host:	Rabbit
Isotype:	IgG
Clonality:	Polyclonal
Immunogen:	Synthetic phospho-peptide corresponding to amino acid residues surrounding Ser923 conjugated to KLH
Formulation:	100 µl in 10 mM HEPES (pH 7.5), 150 mM NaCl, 100 µg per ml BSA and 50% glycerol.
Purification:	Affinity Purified
Conjugation:	Unconjugated
Storage:	Store at -20°C as received.
Stability:	Stable for 12 months from date of receipt.
Predicted Protein Size:	102 kDa
Gene Name:	gamma-aminobutyric acid type B receptor subunit 1
Database Link:	NP_112290 Entrez Gene 81657 Rat Q9Z0U4
Synonyms:	dj271M21.1.1; dj271M21.1.2; FLJ92613; GABA-B-R1; GABABR1; GABBR1-3; GB1; GPRC3A; hGB1a; OTTHUMP00000109099



[View online »](#)

Product images:



Western blot of rat synaptic membrane showing specific immunolabeling of the ~102k GABAB R1 protein phosphorylated at Ser923 (control). The phosphospecificity of this labeling is shown in the second lane (lambda-phosphatase: λ-Ptase). The blot is identical to the control except that it was incubated in λ-Ptase (1200 units for 30 min) before being exposed to the phospho-Ser923 GABAB antibody. The immunolabeling is completely eliminated by treatment with λ-Ptase.