

## Product datasheet for **TA309141**

### Gabrg2 Rabbit Polyclonal Antibody

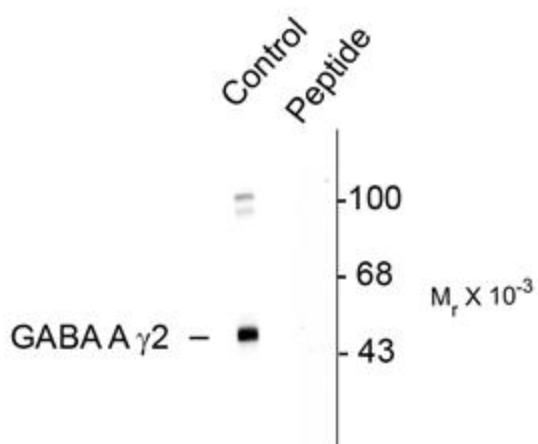
#### Product data:

Product Type:	Primary Antibodies
Applications:	WB
Recommended Dilution:	WB: 1:1000
Reactivity:	Rat
Modifications:	Phospho-specific
Host:	Rabbit
Isotype:	IgG
Clonality:	Polyclonal
Immunogen:	Synthetic phospho-peptide corresponding to amino acid residues surrounding Ser327 conjugated to KLH
Formulation:	100 µl in 10 mM HEPES (pH 7.5), 150 mM NaCl, 100 µg per ml BSA and 50% glycerol.
Purification:	Affinity Purified
Conjugation:	Unconjugated
Storage:	Store at -20°C as received.
Stability:	Stable for 12 months from date of receipt.
Predicted Protein Size:	45 kDa
Gene Name:	gamma-aminobutyric acid type A receptor gamma 2 subunit
Database Link:	<a href="#">NP_899156</a> <a href="#">Entrez Gene 29709 Rat</a> <a href="#">P18508</a>
Synonyms:	CAE2; ECA2; GEFSP3



[View online »](#)

## Product images:



Western blot of rat cortex showing specific immunolabeling of the ~45k GABA  $\gamma$ 2 protein phosphorylated at Ser327 (control). Immunolabeling is blocked by the phosphopeptide (peptide) used as antigen but not by the corresponding dephosphopeptide (not shown).