

Product datasheet for **TA309139**

Gabrg2 Rabbit Polyclonal Antibody

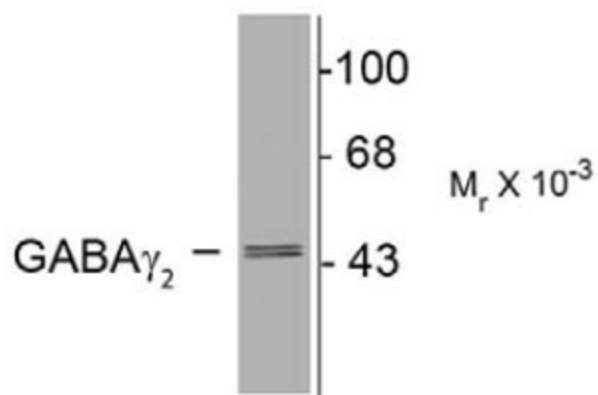
Product data:

Product Type:	Primary Antibodies
Applications:	WB
Recommended Dilution:	WB: 1:1000, IHC: 1:400
Reactivity:	Rat
Host:	Rabbit
Isotype:	IgG
Clonality:	Polyclonal
Immunogen:	Synthetic peptide corresponding to amino acid residues specific to the gamma 2 subunit conjugated to KLH
Formulation:	neat serum
Purification:	Neat Serum
Conjugation:	Unconjugated
Storage:	Store at -20°C as received.
Stability:	Stable for 12 months from date of receipt.
Predicted Protein Size:	46 kDa
Gene Name:	gamma-aminobutyric acid type A receptor gamma 2 subunit
Database Link:	NP_899156 Entrez Gene 29709 Rat P18508
Synonyms:	CAE2; ECA2; GEFSP3



[View online »](#)

Product images:



Western blot of rat spinal cord showing specific immunolabeling of the ~48k α_1 - and α_2 -subunits of the glycine receptor. The labeling was absent from a rat hippocampal (hipp) lysate as the glycine receptor is not expressed in the hippocampus.