

Product datasheet for **TA309136**

Gabrb3 Rabbit Polyclonal Antibody

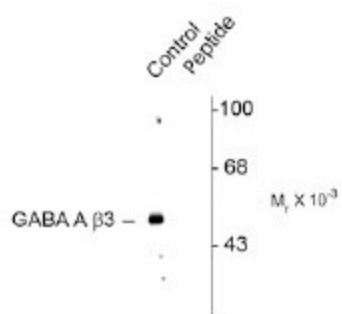
Product data:

Product Type:	Primary Antibodies
Applications:	WB
Recommended Dilution:	WB: 1:1000
Reactivity:	Rat
Modifications:	Phospho-specific
Host:	Rabbit
Isotype:	IgG
Clonality:	Polyclonal
Immunogen:	Synthetic phospho-peptide corresponding to amino acid residues surrounding Ser408/409 conjugated to KLH
Formulation:	100 µl in 10 mM HEPES (pH 7.5), 150 mM NaCl, 100 µg per ml BSA and 50% glycerol.
Purification:	Affinity Purified
Conjugation:	Unconjugated
Storage:	Store at -20°C as received.
Stability:	Stable for 12 months from date of receipt.
Predicted Protein Size:	53 kDa
Gene Name:	gamma-aminobutyric acid type A receptor beta 3 subunit
Database Link:	NP_058761 Entrez Gene 24922 Rat P63079
Synonyms:	ECA5; MGC9051



[View online »](#)

Product images:



Western blot of rat hippocampal lysate showing specific immunolabeling of the ~53k GABAA β 3 protein phosphorylated at Ser408/409 (control). Immunolabeling is blocked by the phosphopeptide (peptide) used as antigen but not by the corresponding dephosphopeptide (not shown).