

## Product datasheet for **TA309134**

### Gabrb2 Rabbit Polyclonal Antibody

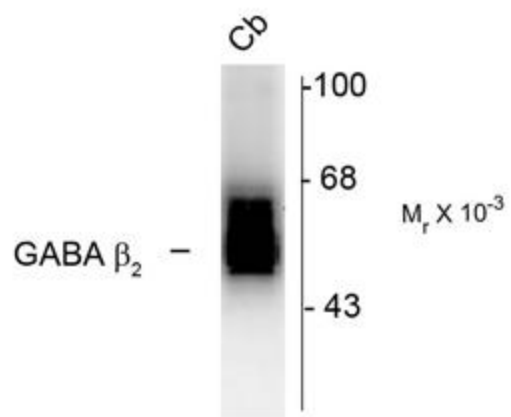
#### Product data:

|                         |  |
|-------------------------|--|
| Product Type:           | Primary Antibodies   |
| Applications:           | WB   |
| Recommended Dilution:   | WB: 1:1000   |
| Reactivity:             | Rat  |
| Host:                   | Rabbit   |
| Isotype:                | IgG  |
| Clonality:              | Polyclonal   |
| Immunogen:              | Fusion protein from the cytoplasmic loop of the beta 2 subunit                               |
| Formulation:            | 100 µl in 10 mM HEPES (pH 7.5), 150 mM NaCl, 100 µg per ml BSA and 50% glycerol.             |
| Purification:           | Affinity Purified  |
| Conjugation:            | Unconjugated   |
| Storage:                | Store at -20°C as received.  |
| Stability:              | Stable for 12 months from date of receipt.   |
| Predicted Protein Size: | 55 kDa   |
| Gene Name:              | gamma-aminobutyric acid type A receptor beta 2 subunit                                       |
| Database Link:          | <a href="#">NP_037089</a><br><a href="#">Entrez Gene 25451 Rat</a><br><a href="#">P63138</a> |
| Synonyms:               | MGC119386; MGC119388; MGC119389; OTTHUMP00000160872  |



[View online »](#)

## Product images:



Western blot of 7 μg of rat cerebellum (Cb) showing specific immunolabeling of the ~55kDa subunit of the GABAA-R.