

## Product datasheet for **TA309132**

### Gabra6 Rabbit Polyclonal Antibody

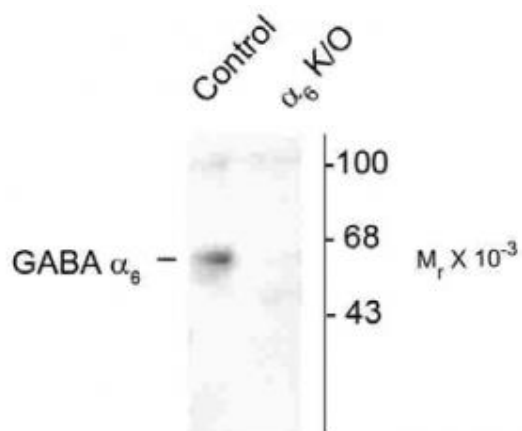
#### Product data:

Product Type:	Primary Antibodies
Applications:	WB
Recommended Dilution:	WB: 1:1000
Reactivity:	Rat, Mouse
Host:	Rabbit
Isotype:	IgG
Clonality:	Polyclonal
Immunogen:	Fusion protein from the cytoplasmic loop of the alpha 6 subunit
Formulation:	100 µl in 10 mM HEPES (pH 7.5), 150 mM NaCl, 100 µg per ml BSA and 50% glycerol.
Purification:	Affinity Purified
Conjugation:	Unconjugated
Storage:	Store at -20°C as received.
Stability:	Stable for 12 months from date of receipt.
Predicted Protein Size:	57 kDa
Gene Name:	gamma-aminobutyric acid (GABA) A receptor, subunit alpha 6
Database Link:	<a href="#">NP_032094</a> <a href="#">Entrez Gene 29708 Rat</a> <a href="#">Entrez Gene 14399 Mouse</a> <a href="#">P16305</a>
Synonyms:	MGC116903; MGC116904



[View online »](#)

## Product images:



Western blot of mouse forebrain lysates from Wild Type (Control) and  $\hat{I}\pm 6$ -knockout ( $\hat{I}\pm 6$ -K/O) animals showing specific immunolabeling of the ~57k  $\hat{I}\pm 6$ -subunit of the GABAA-R. The labeling was absent from a lysate prepared from  $\hat{I}\pm 6$ -knockout animals.