

Product datasheet for **TA309131**

Gabra6 Rabbit Polyclonal Antibody

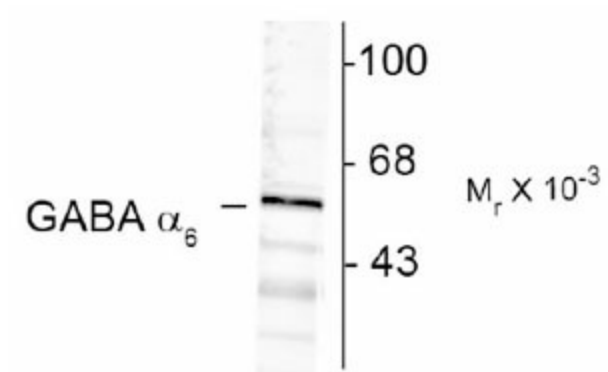
Product data:

Product Type:	Primary Antibodies
Applications:	WB
Recommended Dilution:	WB: 1:1000
Reactivity:	Mouse, Rat
Host:	Rabbit
Isotype:	IgG
Clonality:	Polyclonal
Immunogen:	Synthetic peptide corresponding to amino acid residues specific to the alpha 6 subunit conjugated to KLH
Formulation:	neat serum
Purification:	Neat Serum
Conjugation:	Unconjugated
Storage:	Store at -20°C as received.
Stability:	Stable for 12 months from date of receipt.
Predicted Protein Size:	57 kDa
Gene Name:	gamma-aminobutyric acid (GABA) A receptor, subunit alpha 6
Database Link:	NP_032094 Entrez Gene 29708 Rat Entrez Gene 14399 Mouse P16305
Synonyms:	MGC116903; MGC116904



[View online »](#)

Product images:



Western blot of rat cortex lysate showing immunolabeling of the ~57k α_6 -subunit of the GABAA-R.