

Product datasheet for **TA309124**

Gabra1 Rabbit Polyclonal Antibody

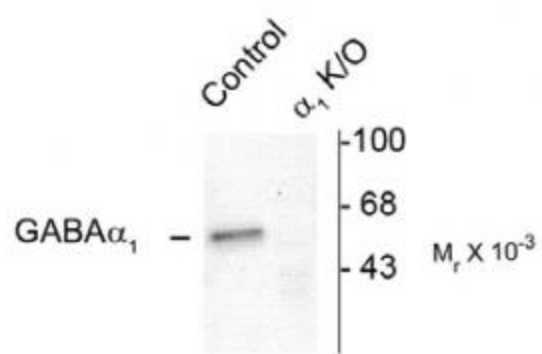
Product data:

Product Type:	Primary Antibodies
Applications:	WB
Recommended Dilution:	WB: 1:1000
Reactivity:	Mouse, Rat
Host:	Rabbit
Isotype:	IgG
Clonality:	Polyclonal
Immunogen:	Synthetic peptide corresponding to amino acid residues from the N-terminal region conjugated to KLH
Formulation:	100 µl in 10 mM HEPES (pH 7.5), 150 mM NaCl, 100 µg per ml BSA and 50% glycerol.
Purification:	Affinity Purified
Conjugation:	Unconjugated
Storage:	Store at -20°C as received.
Stability:	Stable for 12 months from date of receipt.
Predicted Protein Size:	51 kDa
Gene Name:	gamma-aminobutyric acid (GABA) A receptor, subunit alpha 1
Database Link:	NP_034380 Entrez Gene 29705 Rat Entrez Gene 14394 Mouse P62812
Synonyms:	ECA4; EJM; EJM5



[View online »](#)

Product images:



Western blot of mouse forebrain lysates from Wild Type (Control) and $\hat{1}\pm 1$ -knockout ($\hat{1}\pm 1$ -K/O) animals showing specific immunolabeling of the ~51k $\hat{1}\pm 1$ -subunit of the GABAA-R. The labeling was absent from a lysate prepared from $\hat{1}\pm 1$ -knockout animals.