

Product datasheet for **TA309121**

Mapk1 Rabbit Polyclonal Antibody

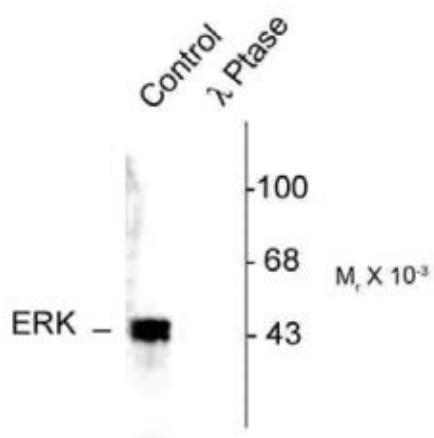
Product data:

Product Type:	Primary Antibodies
Applications:	WB
Recommended Dilution:	WB: 1:1000, IHC: 1:500
Reactivity:	Human, Rat
Modifications:	Phospho-specific
Host:	Rabbit
Isotype:	IgG
Clonality:	Polyclonal
Immunogen:	Synthetic phospho-peptide corresponding to amino acid residues surrounding Thr202/Tyr204 conjugated to KLH
Formulation:	100 µl in 10 mM HEPES (pH 7.5), 150 mM NaCl, 100 µg per ml BSA and 50% glycerol.
Purification:	Affinity Purified
Conjugation:	Unconjugated
Storage:	Store at -20°C as received.
Stability:	Stable for 12 months from date of receipt.
Predicted Protein Size:	42/44 kDa
Gene Name:	mitogen activated protein kinase 1
Database Link:	NP_446294 Entrez Gene 5594 Human Entrez Gene 116590 Rat P63086
Synonyms:	ERK; ERK-2; ERK2; ERT1; MAPK2; p38; p40; p41; p41 mapk; p42-MAPK; P42MAPK; PRKM1; PRKM2



[View online »](#)

Product images:



Western blot of human T47D cell lysates showing specific immunolabeling of ~42-44k ERK/MAPK protein phosphorylated at Thr202 and Tyr204 (Control). The phosphospecificity of this labeling is shown in the second lane (lambda-phosphatase: λ-Ptase). The blot is identical to the control except that it was incubated in λ-Ptase (1200 units for 30 min) before being exposed to the Anti-Thr202/Tyr204 ERK/MAPK. The immunolabeling is completely eliminated by treatment with λ-Ptase.