

## Product datasheet for **TA309120**

### Mapk1 Rabbit Polyclonal Antibody

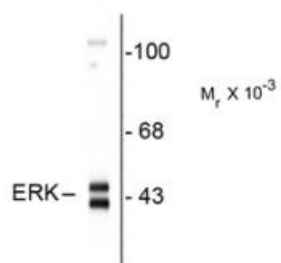
#### Product data:

Product Type:	Primary Antibodies
Applications:	WB
Recommended Dilution:	WB: 1:1000
Reactivity:	Rat
Host:	Rabbit
Isotype:	IgG
Clonality:	Polyclonal
Immunogen:	Synthetic peptide corresponding to amino acid residues from the C-terminal region conjugated to KLH
Formulation:	100 µl in 10 mM HEPES (pH 7.5), 150 mM NaCl, 100 µg per ml BSA and 50% glycerol.
Purification:	Affinity Purified
Conjugation:	Unconjugated
Storage:	Store at -20°C as received.
Stability:	Stable for 12 months from date of receipt.
Predicted Protein Size:	42/44 kDa
Gene Name:	mitogen-activated protein kinase 1
Database Link:	<a href="#">NP_036079</a> <a href="#">Entrez Gene 116590 Rat</a> <a href="#">P63085</a>
Synonyms:	ERK; ERK-2; ERK2; ERT1; MAPK2; p38; p40; p41; p41mapk; p42-MAPK; P42MAPK; PRKM1; PRKM2



[View online »](#)

## Product images:



Western blot of rat hippocampal homogenate showing specific immunolabeling of ~42-44k ERK/MAPK protein.