

Product datasheet for **TA309118**

Ephb2 Rabbit Polyclonal Antibody

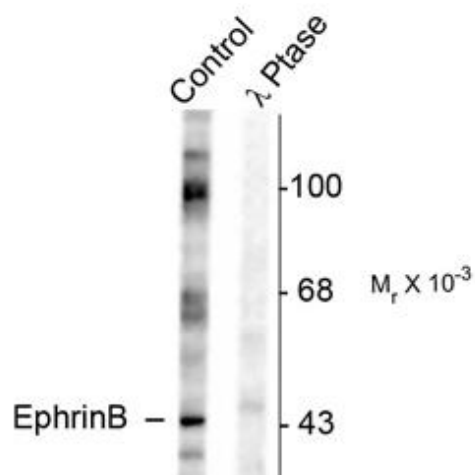
Product data:

Product Type:	Primary Antibodies
Applications:	WB
Recommended Dilution:	WB: 1:1000
Reactivity:	Rat
Modifications:	Phospho-specific
Host:	Rabbit
Isotype:	IgG
Clonality:	Polyclonal
Immunogen:	Synthetic phospho-peptide corresponding to amino acid residues surrounding Tyr317 conjugated to KLH
Formulation:	100 µl in 10 mM HEPES (pH 7.5), 150 mM NaCl, 100 µg per ml BSA and 50% glycerol.
Purification:	Affinity Purified
Conjugation:	Unconjugated
Storage:	Store at -20°C as received.
Stability:	Stable for 12 months from date of receipt.
Predicted Protein Size:	46 kDa
Gene Name:	Eph receptor B2
Database Link:	NP_001120791 Entrez Gene 313633 Rat
Synonyms:	CAPB; DRT; EPHT3; EPTH3; ERK; Hek5; MGC87492; PCBC; Tyro5



[View online »](#)

Product images:



Western blot of rat testes lysate showing specific immunolabeling of the ~46k EphrinB phosphorylated at Tyr317 (Control). The phosphospecificity of this labeling is shown in the second lane (lambda-phosphatase: λ-Ptase). The blot is identical to the control except that it was incubated in λ-Ptase (1200 units for 30 min) before being exposed to the Anti-Tyr317 EphrinB. The immunolabeling of the EphrinB is completely eliminated by treatment with λ-Ptase.