

## Product datasheet for **TA309113**

### Dnm1 Rabbit Polyclonal Antibody

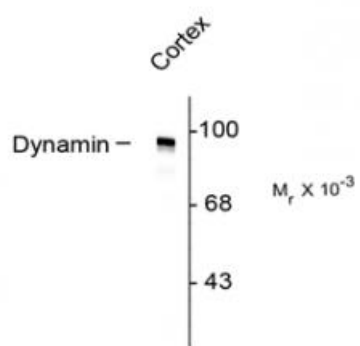
#### Product data:

|                         |  |
|-------------------------|--|
| Product Type:           | Primary Antibodies   |
| Applications:           | WB   |
| Recommended Dilution:   | WB: 1:1000   |
| Reactivity:             | Rat  |
| Host:                   | Rabbit   |
| Isotype:                | IgG  |
| Clonality:              | Polyclonal   |
| Immunogen:              | Synthetic peptide corresponding to amino acid residues from the N-terminal region conjugated to KLH  |
| Formulation:            | 100 µl in 10 mM HEPES (pH 7.5), 150 mM NaCl, 100 µg per ml BSA and 50% glycerol.   |
| Purification:           | Affinity Purified  |
| Conjugation:            | Unconjugated   |
| Storage:                | Store at -20°C as received.  |
| Stability:              | Stable for 12 months from date of receipt.   |
| Predicted Protein Size: | 95 kDa   |
| Gene Name:              | dynamin 1  |
| Database Link:          | <a href="#">NP_542420</a><br><a href="#">Entrez Gene 140694 Rat P21575</a>   |
| Background:             | This gene encodes a member of the dynamin subfamily of GTP-binding proteins. The encoded protein possesses unique mechanochemical properties used to tubulate and sever membranes, and is involved in clathrin-mediated endocytosis and other vesicular trafficking processes. Actin and other cytoskeletal proteins act as binding partners for the encoded protein, which can also self-assemble leading to stimulation of GTPase activity. More than sixty highly conserved copies of the 3' region of this gene are found elsewhere in the genome, particularly on chromosomes Y and 15. Alternatively spliced transcript variants encoding different isoforms have been described. [provided by RefSeq] |
| Synonyms:               | DNM  |



[View online »](#)

## Product images:



Western Blot of rat cortex lysate showing labeling of the ~95k Dynamin protein.