

## Product datasheet for **TA309112**

### Dopamine Transporter (SLC6A3) Rabbit Polyclonal Antibody

#### Product data:

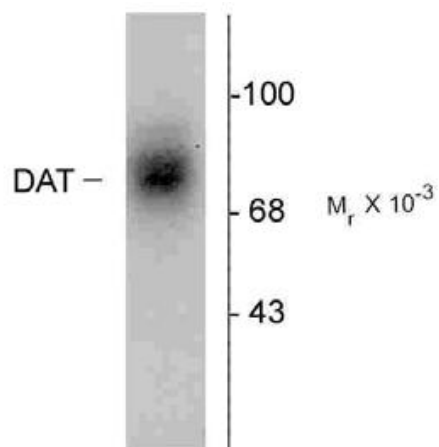
Product Type:	Primary Antibodies
Applications:	WB
Recommended Dilution:	WB: 1:100, IHC: 1:1000
Reactivity:	Human, Monkey
Host:	Rabbit
Isotype:	IgG
Clonality:	Polyclonal
Immunogen:	Synthetic peptide corresponding to amino acid residues from the extracellular loop 2 region conjugated to KLH
Formulation:	100 µl in 10 mM HEPES (pH 7.5), 150 mM NaCl, 100 µg per ml BSA and 50% glycerol.
Purification:	Affinity Purified
Conjugation:	Unconjugated
Storage:	Store at -20°C as received.
Stability:	Stable for 12 months from date of receipt.
Predicted Protein Size:	88 kDa
Gene Name:	solute carrier family 6 member 3
Database Link:	<a href="#">NP_001035</a> <a href="#">Entrez Gene 574143 Monkey</a> <a href="#">Entrez Gene 6531 Human</a> <a href="#">Q01959</a>
Background:	This gene encodes a dopamine transporter which is a member of the sodium- and chloride-dependent neurotransmitter transporter family. The 3' UTR of this gene contains a 40 bp tandem repeat, referred to as a variable number tandem repeat or VNTR, which can be present in 3 to 11 copies. Variation in the number of repeats is associated with idiopathic epilepsy, attention-deficit hyperactivity disorder, dependence on alcohol and cocaine, susceptibility to Parkinson disease and protection against nicotine dependence.
Synonyms:	DAT; DAT1; PKDYS
Protein Families:	Druggable Genome, Transmembrane



[View online »](#)

Protein Pathways: Parkinson's disease

**Product images:**



Western blot of human caudate lysate showing specific immunolabeling of the ~88k DAT protein.