

## Product datasheet for **TA309109**

### Dopamine beta Hydroxylase (DBH) Sheep Polyclonal Antibody

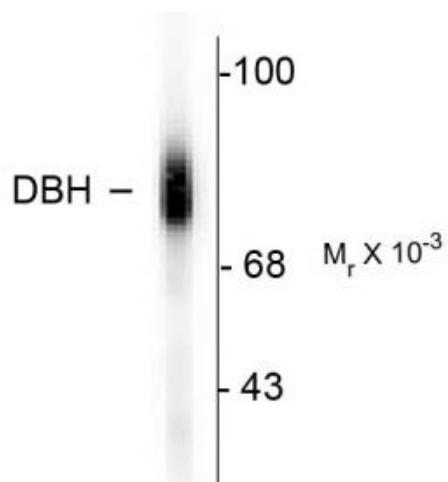
#### Product data:

Product Type:	Primary Antibodies
Applications:	WB
Recommended Dilution:	WB: 1:1000
Reactivity:	Human, Mouse, Primate
Host:	Sheep
Clonality:	Polyclonal
Immunogen:	Synthetic peptide corresponding to amino acid residues from the C-terminal region conjugated to KLH
Formulation:	100 µl in 10 mM HEPES (pH 7.5), 150 mM NaCl, 100 µg per ml BSA and 50% glycerol.
Purification:	Affinity Purified
Conjugation:	Unconjugated
Storage:	Store at -20°C as received.
Stability:	Stable for 12 months from date of receipt.
Predicted Protein Size:	75 kDa
Gene Name:	dopamine beta-hydroxylase
Database Link:	<a href="#">NP_000778</a> <a href="#">Entrez Gene 13166 Mouse</a> <a href="#">Entrez Gene 1621 Human</a> <a href="#">P09172</a>
Background:	The protein encoded by this gene is an oxidoreductase belonging to the copper type II, ascorbate-dependent monooxygenase family. It is present in the synaptic vesicles of postganglionic sympathetic neurons and converts dopamine to norepinephrine. It exists in both soluble and membrane-bound forms, depending on the absence or presence, respectively, of a signal peptide. [provided by RefSeq]
Synonyms:	DBM
Protein Families:	Druggable Genome, Secreted Protein, Transmembrane
Protein Pathways:	Metabolic pathways, Tyrosine metabolism



[View online »](#)

## Product images:



Western blot of human adrenal medulla lysate showing specific immunolabeling of the ~75k DBH protein.