

Product datasheet for **TA309106**

Ddc Rabbit Polyclonal Antibody

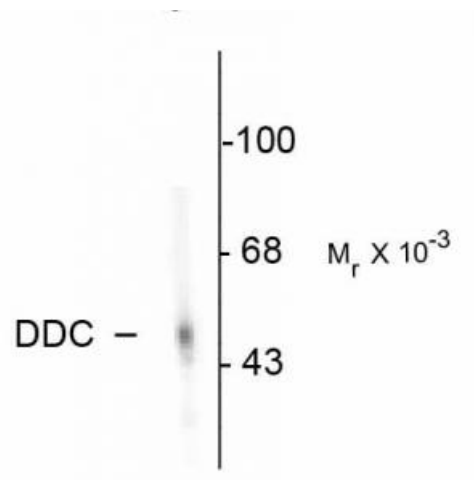
Product data:

Product Type:	Primary Antibodies
Applications:	WB
Recommended Dilution:	WB: 1:1000
Reactivity:	Rat
Host:	Rabbit
Isotype:	IgG
Clonality:	Polyclonal
Immunogen:	SDS denatured, recombinant bovine aromatic DOPA decarboxylase expressed in E. coli and purified from inclusion bodies
Formulation:	100 µl in 10 mM HEPES (pH 7.5), 150 mM NaCl, 100 µg per ml BSA and 50% glycerol.
Purification:	Affinity Purified
Conjugation:	Unconjugated
Storage:	Store at -20°C as received.
Stability:	Stable for 12 months from date of receipt.
Predicted Protein Size:	55 kDa
Gene Name:	dopa decarboxylase
Database Link:	NP_036677 Entrez Gene 24311 Rat P14173
Synonyms:	AADC



[View online »](#)

Product images:



Western blot of rat adrenal medulla. As shown in the autoradiograph, the antibody is specific for the ~55k DDC protein.