

## Product datasheet for **TA309103**

### PPP1R1B Rabbit Polyclonal Antibody

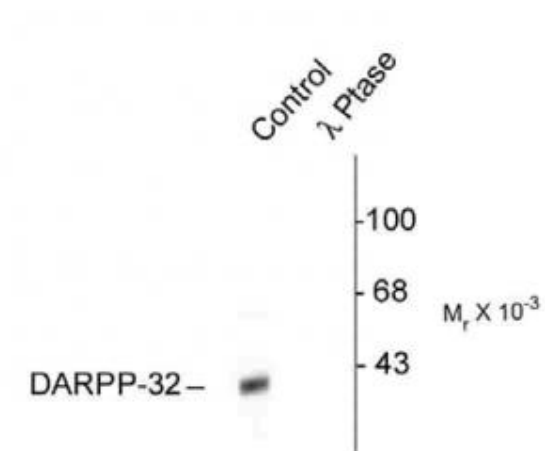
#### Product data:

Product Type:	Primary Antibodies
Applications:	WB
Recommended Dilution:	WB: 1:1000
Reactivity:	Rat
Modifications:	Phospho-specific
Host:	Rabbit
Isotype:	IgG
Clonality:	Polyclonal
Immunogen:	Synthetic phospho-peptide corresponding to amino acid residues surrounding Thr34 conjugated to KLH
Formulation:	100 µl in 10 mM HEPES (pH 7.5), 150 mM NaCl, 100 µg per ml BSA and 50% glycerol.
Purification:	Affinity Purified
Conjugation:	Unconjugated
Storage:	Store at -20°C as received.
Stability:	Stable for 12 months from date of receipt.
Predicted Protein Size:	32 kDa
Gene Name:	protein phosphatase 1, regulatory (inhibitor) subunit 1B
Database Link:	<a href="#">NP_612530</a> <a href="#">Entrez Gene 360616 Rat</a> <a href="#">Q6J4I0</a>
Synonyms:	DARPP-32; DARPP32; FLJ20940; OTTHUMP00000164276



[View online »](#)

## Product images:



Western blot of rat caudate lysate showing specific immunolabeling of the ~32k DARPP-32 phosphorylated at Thr34 (Control). The phosphospecificity of this labeling is shown in the second lane (lambda-phosphatase:  $\lambda$ -Ptase). The blot is identical to the control except that it was incubated in  $\lambda$ -Ptase (1200 units for 30 min) before being exposed to the Anti-Thr34 DARPP-32. The immunolabeling is completely eliminated by treatment with  $\lambda$ -Ptase.