

Product datasheet for **TA309101**

Creb1 Rabbit Polyclonal Antibody

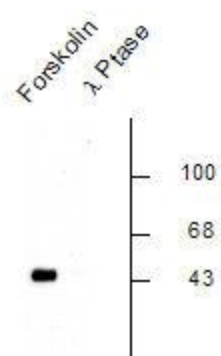
Product data:

Product Type:	Primary Antibodies
Applications:	WB
Recommended Dilution:	WB: 1:1000
Reactivity:	Rat
Modifications:	Phospho-specific
Host:	Rabbit
Isotype:	IgG
Clonality:	Polyclonal
Immunogen:	Synthetic phospho-peptide corresponding to amino acid residues surrounding Ser133 conjugated to KLH
Formulation:	100 µl in 10 mM HEPES (pH 7.5), 150 mM NaCl, 100 µg per ml BSA and 50% glycerol.
Purification:	Affinity Purified
Conjugation:	Unconjugated
Storage:	Store at -20°C as received.
Stability:	Stable for 12 months from date of receipt.
Predicted Protein Size:	45 kDa
Gene Name:	cAMP responsive element binding protein 1
Database Link:	NP_112279 Entrez Gene 81646 Rat P15337
Synonyms:	CREB; CREB-1; MGC9284; OTTHUMP00000206660



[View online »](#)

Product images:



Western blot of a forskolin stimulated rat hippocampal lysate showing specific immunolabeling of the ~45k CREB phosphorylated at Ser133 (Left Lane). The right lane is indicative that the specific immunolabeling of the CREB protein is completely eliminated by treatment with lambda phosphatase (λ -Ptase, 1200 units for 30 min).