

Product datasheet for **TA309097**

Collagen I (COL1A1) Rabbit Polyclonal Antibody

Product data:

Product Type:	Primary Antibodies
Applications:	IHC, WB
Recommended Dilution:	WB: 1:1000, IHC: 1:100
Reactivity:	Human, Mouse, Sheep
Host:	Rabbit
Isotype:	IgG
Clonality:	Polyclonal
Immunogen:	Synthetic peptide corresponding to amino acid residues specific to the collagen 1, alpha 1 telopeptide conjugated to KLH
Formulation:	100 ul in PBS
Purification:	Affinity Purified
Conjugation:	Unconjugated
Storage:	Store at -20°C as received.
Stability:	Stable for 12 months from date of receipt.
Predicted Protein Size:	140 kDa
Gene Name:	collagen type I alpha 1
Database Link:	NP_000079 Entrez Gene 12842 Mouse Entrez Gene 1277 Human P02452



[View online »](#)

Background:

This gene encodes the pro-alpha1 chains of type I collagen whose triple helix comprises two alpha1 chains and one alpha2 chain. Type I is a fibril-forming collagen found in most connective tissues and is abundant in bone, cornea, dermis and tendon. Mutations in this gene are associated with osteogenesis imperfecta types I-IV, Ehlers-Danlos syndrome type VIIA, Ehlers-Danlos syndrome Classical type, Caffey Disease and idiopathic osteoporosis. Reciprocal translocations between chromosomes 17 and 22, where this gene and the gene for platelet-derived growth factor beta are located, are associated with a particular type of skin tumor called dermatofibrosarcoma protuberans, resulting from unregulated expression of the growth factor. Two transcripts, resulting from the use of alternate polyadenylation signals, have been identified for this gene. [provided by R. Dalgleish]

Synonyms:

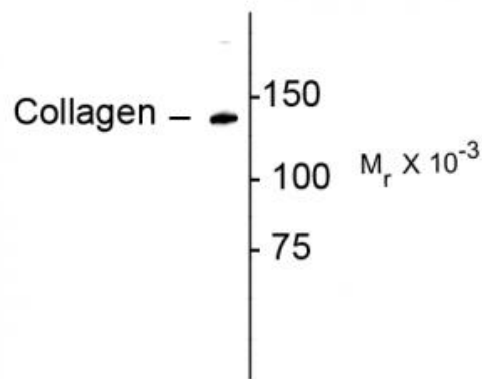
EDSC; OI1; OI2; OI3; OI4

Protein Families:

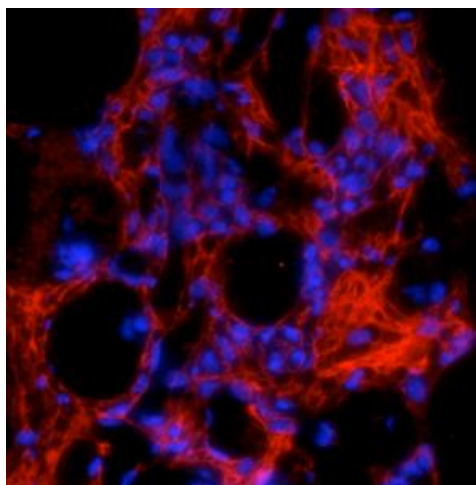
Druggable Genome

Protein Pathways:

ECM-receptor interaction, Focal adhesion

Product images:

Western blot of rat lung lysate showing specific immunolabeling of the ~140k collagen protein.



Immunostaining of formaldehyde-fixed fibrotic mouse lung tissue. The antibody recognizes mature collagen I (red) that has formed fibrils in the extracellular matrix.