

Product datasheet for **TA309095**

COBRA1 (NELFB) Mouse Monoclonal Antibody [Clone ID: F7E4]

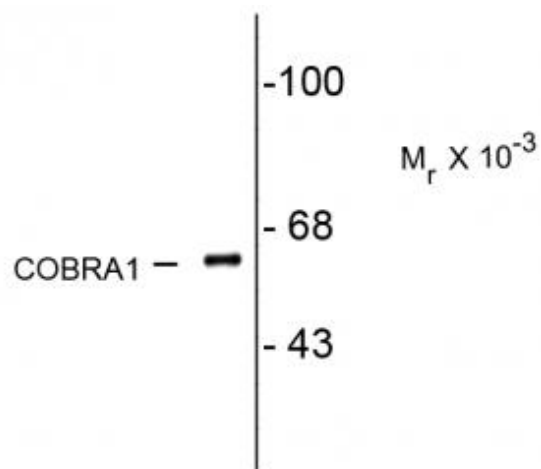
Product data:

Product Type:	Primary Antibodies
Clone Name:	F7E4
Applications:	WB
Recommended Dilution:	WB: 1:1000
Reactivity:	Human, Mouse, Rat
Host:	Mouse
Isotype:	IgG1
Clonality:	Monoclonal
Immunogen:	Recombinant full length human COBRA1 purified from E. coli
Formulation:	100 µl in 10 mM HEPES (pH 7.5), 150 mM NaCl, 100 µg per ml BSA and 50% glycerol.
Purification:	Protein G purified
Conjugation:	Unconjugated
Storage:	Store at -20°C as received.
Stability:	Stable for 12 months from date of receipt.
Predicted Protein Size:	62 kDa
Gene Name:	negative elongation factor complex member B
Database Link:	NP_056271 Entrez Gene 58202 Mouse Entrez Gene 311796 Rat Entrez Gene 25920 Human Q8WX92
Background:	NELFB is a subunit of negative elongation factor (NELF), which also includes NELFA (WHSC2; MIM 606026), either NELFC or NELFD (TH1L; MIM 605297), and NELFE (RDBP; MIM 154040). NELF acts with DRB sensitivity-inducing factor (DSIF), a heterodimer of SPT4 (SUPT4H1; MIM 603555) and SPT5 (SUPT5H; MIM 602102), to cause transcriptional pausing of RNA polymerase II (see MIM 180660) (Narita et al., 2003 [PubMed 12612062]). [supplied by OMIM]
Synonyms:	COBRA1; NELF-B
Protein Families:	Transcription Factors



[View online »](#)

Product images:



Western blot of neonatal rat brain lysate showing specific immunolabeling