

Product datasheet for **TA309094**

Clvs1 Rabbit Polyclonal Antibody

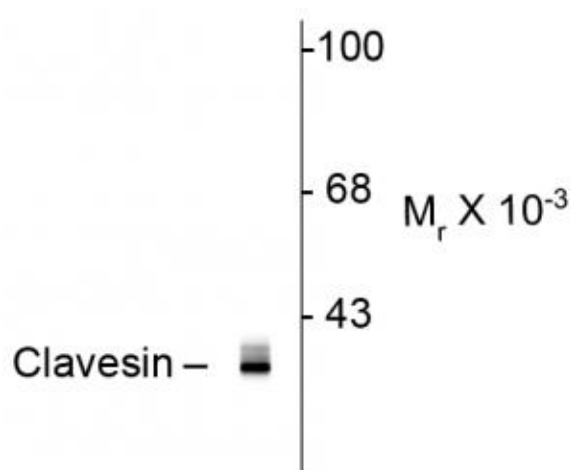
Product data:

Product Type:	Primary Antibodies
Applications:	WB
Recommended Dilution:	WB: 1:1,000, ICC: 1:50
Reactivity:	Rat
Host:	Rabbit
Isotype:	IgG
Clonality:	Polyclonal
Immunogen:	Synthetic peptide corresponding to amino acid residues from the C-terminal region conjugated to KLH
Formulation:	100 ul in PBS + 50% glycerol
Purification:	Affinity Purified
Conjugation:	Unconjugated
Storage:	Store at -20°C as received.
Stability:	Stable for 12 months from date of receipt.
Predicted Protein Size:	35 kDa
Gene Name:	clavesin 1
Database Link:	NP_083216 Entrez Gene 366311 Rat Q9D4C9
Synonyms:	4933402J24Rik; Clavesin-1; Clv1; RGD1564200; Rlbp111; RP23-152A20.1



[View online »](#)

Product images:



Western blot of rat hippocampal homogenate showing specific immunolabeling of the ~ 35k clavesin protein.