

Product datasheet for **TA309089**

Cdk1 Rabbit Polyclonal Antibody

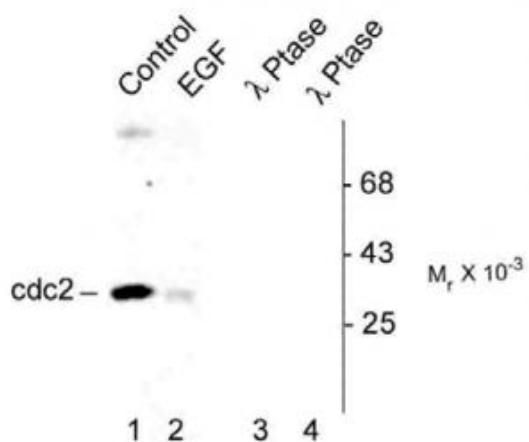
Product data:

Product Type:	Primary Antibodies
Applications:	WB
Recommended Dilution:	WB: 1:1000
Reactivity:	Human, Xenopus
Modifications:	Phospho-specific
Host:	Rabbit
Isotype:	IgG
Clonality:	Polyclonal
Immunogen:	Synthetic phospho-peptide corresponding to amino acid residues surrounding Tyr15 conjugated to KLH
Formulation:	100 µl in 10 mM HEPES (pH 7.5), 150 mM NaCl, 100 µg per ml BSA and 50% glycerol.
Purification:	Affinity Purified
Conjugation:	Unconjugated
Storage:	Store at -20°C as received.
Stability:	Stable for 12 months from date of receipt.
Predicted Protein Size:	34 kDa
Gene Name:	cyclin-dependent kinase 1
Database Link:	NP_062169 Entrez Gene 983 Human P39951
Synonyms:	Cdc2; Cdc2a; p34



[View online »](#)

Product images:



WB of human T47D cells showing specific immunolabeling of the ~34k cdc2 phosphorylated at Tyr15 (Control). Treatment with EGF caused dephosphorylation of the Tyr15 on cdc2 (Lane 2). The phosphospecificity of this labeling is also shown in lane 3 and 4 (lambda-phosphatase: λ-Ptase). These blots are identical to the control except that they were incubated in λ-Ptase before being exposed to the Anti-Phospho-Tyr15 cdc2. The immunolabeling is completely eliminated by treatment with λ-Ptase.