

Product datasheet for **TA309086**

Calb2 Sheep Polyclonal Antibody

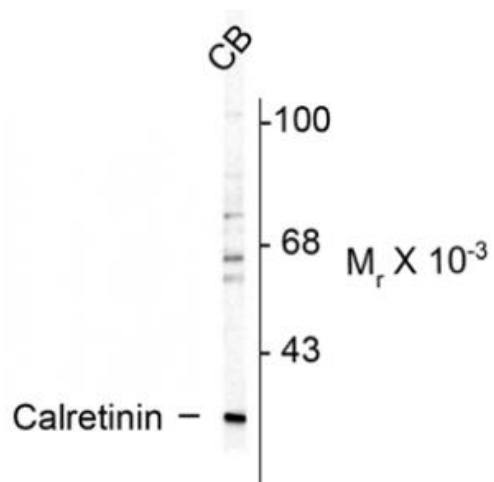
Product data:

Product Type:	Primary Antibodies
Applications:	WB
Recommended Dilution:	WB: 1:1,000, IHC: 1:500, IF: 1:500
Reactivity:	Rat
Host:	Sheep
Clonality:	Polyclonal
Immunogen:	Purified guinea pig calretinin
Formulation:	100 µl in 10 mM Tris, 100 mM NaCl
Purification:	Protein A purified
Conjugation:	Unconjugated
Storage:	Store at -20°C as received.
Stability:	Stable for 12 months from date of receipt.
Predicted Protein Size:	29 kDa
Gene Name:	calbindin 2
Database Link:	NP_446440 Entrez Gene 117059 Rat P47728
Synonyms:	CAB29; CAL2; calretinin; CR



[View online »](#)

Product images:



Western blot of rat cerebellum (CB) lysate showing specific immunolabeling of the ~ 29k calretinin protein.