

## Product datasheet for **TA309079**

### Snca Rabbit Polyclonal Antibody

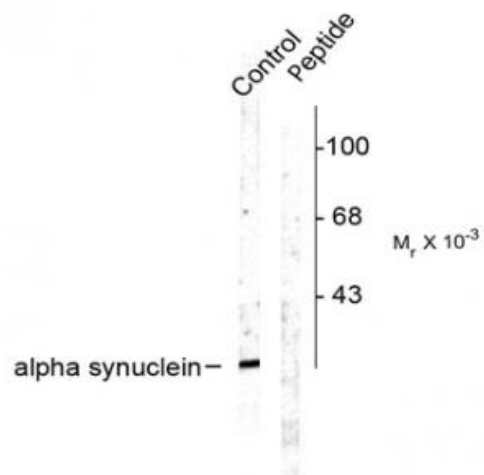
#### Product data:

Product Type:	Primary Antibodies
Applications:	WB
Recommended Dilution:	WB: 1:1000
Reactivity:	Rat
Modifications:	Phospho-specific
Host:	Rabbit
Isotype:	IgG
Clonality:	Polyclonal
Immunogen:	Synthetic phospho-peptide corresponding to amino acid residues surrounding Ser129 conjugated to KLH
Formulation:	100 µl in 10 mM HEPES (pH 7.5), 150 mM NaCl, 100 µg per ml BSA and 50% glycerol.
Purification:	Affinity Purified
Conjugation:	Unconjugated
Storage:	Store at -20°C as received.
Stability:	Stable for 12 months from date of receipt.
Predicted Protein Size:	15 kDa
Gene Name:	synuclein alpha
Database Link:	<a href="#">NP_062042</a> <a href="#">Entrez Gene 29219 Rat</a> <a href="#">P37377</a>
Synonyms:	alpha-synuclein; MGC110988; NACP; OTTHUMP00000161559; OTTHUMP00000161561; PARK1; PARK4; PD1



[View online »](#)

## Product images:



Western blot of rat cortex lysate showing specific labeling of the ~15 k alpha synuclein protein phosphorylated at Ser129. Immunolabeling is blocked by the phosphopeptide (peptide) used as antigen but not by the corresponding dephosphopeptide (not shown).