

## Product datasheet for **TA309075**

### alpha Internexin (INA) Chicken Polyclonal Antibody

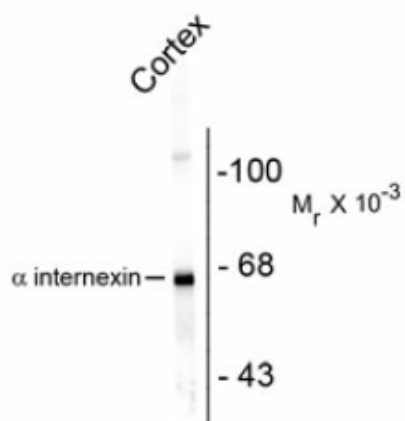
#### Product data:

Product Type:	Primary Antibodies
Applications:	WB
Recommended Dilution:	WB: 1:5,000, IF: 1:500
Reactivity:	Mouse, Human, Rat
Host:	Chicken
Isotype:	IgY
Clonality:	Polyclonal
Immunogen:	Recombinant rat alpha-internexin expressed in and purified from E. coli
Formulation:	total IgY fraction in PBS + 10 mM NaN <sub>3</sub> .
Purification:	Total IgY fraction
Conjugation:	Unconjugated
Storage:	Store at -20°C as received.
Stability:	Stable for 12 months from date of receipt.
Predicted Protein Size:	66 kDa
Gene Name:	internexin neuronal intermediate filament protein alpha
Database Link:	<a href="#">NP_116116</a> <a href="#">Entrez Gene 24503 Rat</a> <a href="#">Entrez Gene 226180 Mouse</a> <a href="#">Entrez Gene 9118 Human</a> <a href="#">Q16352</a>
Synonyms:	NEF5; NF-66; TXBP-1



[View online »](#)

## Product images:



Western blot of rat cortex lysate showing specific immunolabeling of the ~ 66k alpha internexin protein.