

Product datasheet for **TA309074**

alpha Internexin (INA) Mouse Monoclonal Antibody [Clone ID: ID2]

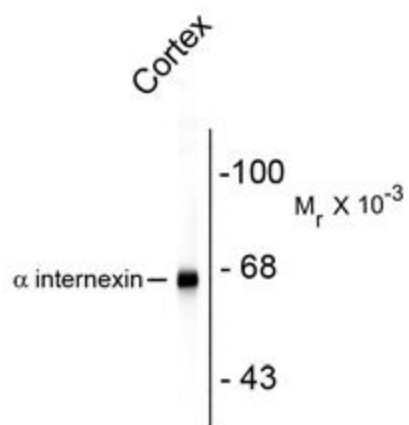
Product data:

Product Type:	Primary Antibodies
Clone Name:	ID2
Applications:	WB
Recommended Dilution:	WB: 1:2,000, IF: 1:250, IHC: 1:1,000
Reactivity:	Human, Mouse, Rat
Host:	Mouse
Isotype:	IgG1
Clonality:	Monoclonal
Immunogen:	Recombinant rat alpha-internexin expressed in and purified from E. coli
Formulation:	total IgG fraction + 10 mM NaN ₃ .
Purification:	Total IgG fraction
Conjugation:	Unconjugated
Storage:	Store at -20°C as received.
Stability:	Stable for 12 months from date of receipt.
Predicted Protein Size:	66 kDa
Gene Name:	internexin neuronal intermediate filament protein alpha
Database Link:	NP_116116 Entrez Gene 24503 Rat Entrez Gene 226180 Mouse Entrez Gene 9118 Human Q16352
Synonyms:	NEF5; NF-66; TXBP-1



[View online »](#)

Product images:



Western blot of rat cortex lysate showing specific immunolabeling of the ~ 66k alpha internexin protein