

Product datasheet for **TA309072**

Ywhab Rabbit Polyclonal Antibody

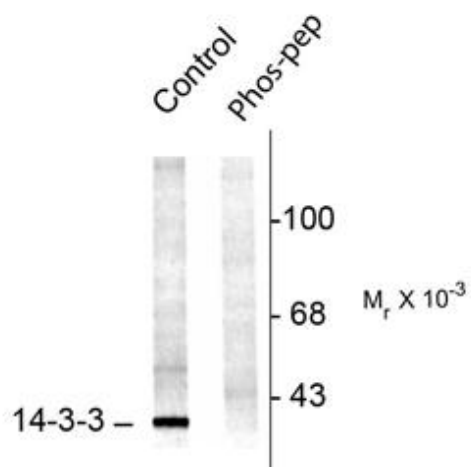
Product data:

Product Type:	Primary Antibodies
Applications:	WB
Recommended Dilution:	WB: 1:1000, IHC: 1:500
Reactivity:	Human, Rat
Modifications:	Phospho-specific
Host:	Rabbit
Isotype:	IgG
Clonality:	Polyclonal
Immunogen:	Synthetic phospho-peptide corresponding to amino acid residues surrounding Ser58 conjugated to KLH
Formulation:	100 µl in 10 mM HEPES (pH 7.5), 150 mM NaCl, 100 µg per ml BSA and 50% glycerol.
Purification:	Affinity Purified
Conjugation:	Unconjugated
Storage:	Store at -20°C as received.
Stability:	Stable for 12 months from date of receipt.
Predicted Protein Size:	29 kDa
Gene Name:	tyrosine 3-monooxygenase/tryptophan 5-monooxygenase activation protein, beta
Database Link:	NP_062250 Entrez Gene 7529 Human Entrez Gene 56011 Rat P35213
Synonyms:	GW128; HS1; KCIP-1



[View online »](#)

Product images:



Western blot of rat brainstem lysate showing specific immuno- labeling of the ~29k 14-3-3 protein phosphorylated at Ser58 (Control). The immunolabeling is blocked by the phosphopeptide used as the antigen (Phos-pep) but not by the corresponding dephosphopeptide (not shown).