

Product datasheet for **TA309068**

CCNI2 Rabbit Polyclonal Antibody

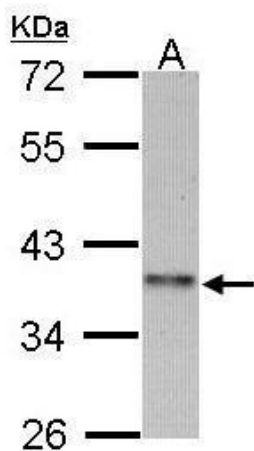
Product data:

Product Type:	Primary Antibodies
Applications:	WB
Recommended Dilution:	WB:1:500-1:3000
Reactivity:	Human
Host:	Rabbit
Isotype:	IgG
Clonality:	Polyclonal
Immunogen:	Recombinant fragment corresponding to a region within amino acids 170 and 369 of Cyclin I2 (Uniprot ID#Q6ZMN8)
Formulation:	0.1M Tris, 0.1M Glycine, 10% Glycerol (pH7). 0.01% Thimerosal was added as a preservative.
Concentration:	lot specific
Purification:	Purified by antigen-affinity chromatography.
Conjugation:	Unconjugated
Storage:	Store at -20°C as received.
Stability:	Stable for 12 months from date of receipt.
Predicted Protein Size:	41 kDa
Gene Name:	cyclin I family member 2
Database Link:	NP_001034869 Entrez Gene 645121 Human Q6ZMN8
Synonyms:	FLJ16793



[View online »](#)

Product images:



Sample (30 ug of whole cell lysate). A: 293T. 10% SDS PAGE. TA309068 diluted at 1:1000.